

Apex®

PROTECTIVE COVERS
ANTI-MAR ENGINEERED SOLUTIONS

Custom Designed Anti-Mar Protection For Your Application.

Apex® Anti-Mar Engineered Solutions

- Durable nylon protection
- Eliminates costly re-works
- Custom fit solutions
- Widest range of proven designs



COOPER Power Tools

Apex® Has A Wide Selection Of Custom Designed Anti-Mar Covers.



Over Half A Century Of Quality In Every Design

For many years Apex has been producing protective covers for our quality products. Each was custom designed by our staff of engineers to work in a specific application. Over time we have developed a vast library of designs that work not only for their original applications but may also be a solution for one of your applications.

Our covered product designs include sockets, sockets and extensions, bits and bit holders, nutsetters and many more.

Each design was developed with one or more of the following unique features and capabilities:

- Free-spinning covers which allow the tool to rotate independently of the cover for improved protection of sensitive surfaces.
- Spring-loaded covers which retract when engaging the fastener.
- Embedded magnets in covers increase holding force on fastener.
- Single-piece construction to reduce material interfaces.
- Press fit/non-free-spinning for reduced envelope size in tight clearance applications.



Apex recognizes the need in assembly operations for the protection of painted or finished surfaces. We can coat just about any Apex bit or socket with a protective nylon sleeve. Shown above are some recently manufactured solutions with a brief description of the application.

1. Pick-up Truck Tailgate to Bed Torx® T-45 Bit with magnets within the sleeve to secure fastener.

2. Sun Visor Installation
Phillips bit used with magnetic bit holder. Nylon sleeve reduces headliner and visor damage.

3. Lug Nut Assembly
Magnetic 19MM socket has nylon coating to protect chrome plated and polished aluminum wheels.

4. Antenna Driver
Four-prong antenna bezel nutdriver with nylon sleeve to reduce damage to painted surface.

5. Spare Tire Wing Nut Assembly
All nylon socket to install low torque wing nut.

6. Painted Door Assembly
Only the nutsetter spins within the nylon sleeve, eliminating any mark on surface around the fastener. Nylon sleeve also protects adjacent painted door surface.

How to use this guide:

1. Scan the desired category of product for Assembly Part Numbers that meet your criteria using chart to explain abbreviations.
2. Contact your local Apex representative to confirm suitability and provide pricing.
3. Fill out either the Bit Worksheet or the Socket Quotation Worksheet located in the back of this brochure and fax to your local Apex representative, if your requirements dictate a product not found in the tables that follow.

*Features Abbreviations	ER Embedded Rare Earth Magnets	LC Limited Clearance	R Rare Earth Magnet	SF Surface Drive
B Bolt Clearance	ET Exposed Tip	M Magnetic	RE Retractable / Finder Sleeve	SM Strip Magnet
DM Donut Magnet	FL Fast Lead	P Pinned	RNT Removable Nylon Tip	TD Turned OD
EC Extension Cover Only	FS Free Spinning	PC Partially Covered	RT Recessed Tip	U Universal (Swivel)
EM Embedded Magnets	FT Flush to Tip	PF Press Fit	SB Shallow Broach	

Covered Power Bit Complete Assemblies *(Includes Tool and Anti-Mar Cover)*

Complete Assembly Ordering Number	Bit				Cover Features*
	Type	Drive Size	Pt. Size	Length (in.)	
SD-5211	Phillips	1/4	2	1 15/16	ET PF
SD-4462-3	Phillips	1/4	3	3.5	RE RT RNT
SD-5349	Phillips	1/4	3	3.5	RE RT (for 0.41" dia fastener head)
SD-5346-K	Torx	7/16	45	3.5	RE RT (for 0.56" dia fastener head)
SD-5346-N	Torx	7/16	45	3.5	RE RT (for 0.66" dia fastener head)
SD-5370	Torx	7/16	50	3.5	PF RT (for 1.12" dia fastener head)
SD-5362	Hex	1/4	5 mm	4	PF R
SD-5362-6	Hex	1/4	5 mm	6	PF RT

Covered Insert Bit & Bit Holder Complete Assemblies *(Includes Tool and Anti-Mar Cover)*

Complete Assembly Ordering Number	Holder					Bit					Cover Features*
	Drive Size	Drive Type	Sex	Length (in.)	Features*	Type	Drive Size	Pt. Size	Length (in.)	Features*	
SD-5306	1/4	Hex	M	2 31/32	M	Phillips	1/4	1	1	LC	EM FS RT
SD-5323	1/4	Hex	M	6	M	Torx	1/4	30	1		EM FS RT
SD-5346-O	1/4	Hex	M	2 31/32	M	Torx	1/4	40	1		RE FS RT

Covered Nutsetter Complete Assemblies *(Includes Tool and Anti-Mar Cover)*

Complete Assembly Ordering Number	Nutsetter						Cover Features*
	Drive Size	Drive Type	Opening Size	Opening Type	Length (in.)	Features*	
MNC6N-08-10M-4	1/4	Hex	8 mm	Hex	4	M	FS FT
MNC6N-08-10M-6	1/4	Hex	8 mm	Hex	6	M	FS FT
SMNC6B-08-10M-4	1/4	Hex	8 mm	Hex	4	SM	FS FT
SMNC6B-08-10M-6	1/4	Hex	8 mm	Hex	6	SM	FS FT
SMNC6B-08-10M-9	1/4	Hex	8 mm	Hex	9	SM	FS FT
VMNC-56-10MM	1/4	Hex	10 mm	Hex	2.54		RT PF

Covered Socket Complete Assemblies *(Includes Tool and Anti-Mar Cover)*

Complete Assembly Ordering Number	Socket						Cover Features*
	Drive Size	Drive Type	Opening Size**	Opening Type	Length (in.)	Features*	
MRNC-5.5MME1	1/4	Square	5.5	Hex	0.938	M R	FT PF
MRNC-7MME1	1/4	Square	7	Hex	0.875	M R	FT PF
RMBNC-7MM21	1/4	Square	7	Hex	1.75	R B	FT PF
RMBNC-10MM21	1/4	Square	10	Hex	1.75	R B	FT PF
MNC-10MM11	1/4	Square	10	Hex	1	M	FT PF
VANC-229-10MM	1/4	Square	10	Hex	1.75	M B	FT PF
MRHCNC-22612	3/8	Square	3/8	Hex	1.25	M R TD	RT PF PC
HCNC-22512	3/8	Square	3/8	Hex	1.5	TD SB	FT PF PC
HCNC-13014	3/8	Square	7/16	Hex	1.5	TD SB	FT PF PC
HCNC-13414	3/8	Square	7/16	Hex	1.5	TD	FT PF PC
HCNC-20918	3/8	Square	9/16	Hex	3.5		FT PF PC
BZCNC-30	3/8	Square	3/4	Bezel	1.5	4 lugs	ET PF PC
HCNC-2424	3/8	Square	3/4	Dbl. Hex	0.89	stepped	FT PF PC
BZCNC-31	3/8	Square	69/94	Bezel	1.5	4 lugs	ET PF PC
HCNC-1130-D	3/8	Square	15/16	Dbl. Hex	1.25	stepped	FT PF PC
MVCNC-53-7MM	3/8	Square	7	Hex	2	M	FT PF

Continued on next page.

**Fractions represent inches. Integers represent metric (mm).

*Features Abbreviations	ER Embedded Rare Earth Magnets	LC Limited Clearance	R Rare Earth Magnet	SF Surface Drive
B Bolt Clearance	ET Exposed Tip	M Magnetic	RE Retractable / Finder Sleeve	SM Strip Magnet
DM Donut Magnet	FL Fast Lead	P Pinned	RNT Removable Nylon Tip	TD Turned OD
EC Extension Cover Only	FS Free Spinning	PC Partially Covered	RT Recessed Tip	U Universal (Swivel)
EM Embedded Magnets	FT Flush to Tip	PF Press Fit	SB Shallow Broach	

Covered Socket Complete Assemblies – continued *(Includes Tool and Anti-Mar Cover)*

Complete Assembly Ordering Number	Socket						Cover Features*
	Drive Size	Drive Type	Opening Size**	Opening Type	Length (in.)	Features*	
MNC-8MM23	3/8	Square	8	Hex	2	M	RT PF PC
MBVCNC-707-10MM	3/8	Square	10	Hex	2	M B	RT PF PC
MBVCNC-731-10MM	3/8	Square	10	Hex	2	M B TD	FT PF PC
MBVCNC-733-10MM	3/8	Square	10	Hex	2	M B TD	RT PF PC
MBVCNC-781-10MM	3/8	Square	10	Hex	2	M B TD	FT PF PC
MBVCNC-795-10MM	3/8	Square	10	Hex	2	M B	RT PF PC
MVCNC-734-10MM	3/8	Square	10	Hex	2	M	FT PF
RMBNC-10MM23	3/8	Square	10	Hex	2	R B	FT PF
VCNC-736-10MM	3/8	Square	10	Hex	1.25		RT PF
VCNC-790-10MM	3/8	Square	10	Hex	1.25	TD	RT PF PC
VCSFNC-789-10MM	3/8	Square	10	Hex	3.5	SF TD	FT PF
VCNC-791-10MM-D	3/8	Square	10	Dbl. Hex	1.25		RT PF PC
VCNC-792-10MM-D	3/8	Square	10	Dbl. Hex	2		RT PF PC
MVC-610-13MM	3/8	Square	13	Hex	1.5	M SF	RT PF PC
VCNC-631-13MM	3/8	Square	13	Hex	1.5		RT PF
MBVCNC-634-13MM	3/8	Square	13	Hex	2	M B	RT PF PC
VCNC-667-13MM	3/8	Square	13	Hex	3.5		RT PF PC
VCSFNC-633-13MM	3/8	Square	13	Hex	2.6	SF	RT PF PC
VCNC-69-24MM	3/8	Square	24	Hex	1.5		RT PF PC
MBVENC-104-13MM	1/2	Square	13	Hex	2.25	M B	FT PF
MNC-17MM55	1/2	Square	17	Hex	3.25	M	FT PF
SMVENC-105-18MM	1/2	Square	18	Hex	1.5	SM	FT PF
VESFNC-153-19MM	1/2	Square	19	Hex	3.25	SF	FT PF
VESFNC-105-21MM	1/2	Square	21	Hex	1.5	SF	FT PF
HFSF-14424	5/8	Square	3/4	Hex	1.914	SF	RT PF PC
VFSFNC-118-19MM	5/8	Square	19	Hex	1.875	SF TD	RT PF PC
MBVFNC-117-19MM	5/8	Square	19	Hex	3.5	M B SF TD	RT PF PC
VFSFNC-103-19MM	5/8	Square	19	Hex	3.5	SF TD	RT PF PC
VFSFNC-110-19MM	5/8	Square	19	Hex	3.5	SF TD	RT PF PC
VFSFNC-111-19MM	5/8	Square	19	Hex	3.5	SF TD	RT PF PC
VFSFNC-112-19MM	5/8	Square	19	Hex	3.5	SF TD	RT PF PC
MVFNC-99-19MM	5/8	Square	19	Hex	3.545		RT PF PC ER
MRVFSFNC-115-19MM	5/8	Square	19	Hex	3.75	M R SF TD	RT PF PC
MBRVFNC-116-19MM	5/8	Square	19	Hex	4.5	M B R	RT PF PC
MBRVFSFNC-119-19MM	5/8	Square	19	Hex	4.5	M B R SF	RT PF PC
RMBRVFNC-114-19MM	5/8	Square	19	Hex	4.5	M R	RT PF PC
MRMBVFSFNC-20-21MM	5/8	Square	21	Hex	3	M R SF	RT PF PC
MRVFSFNC-18-21MM	5/8	Square	21	Hex	3	M R SF	RT PF PC
RMBVFSFNC-18-21MM	5/8	Square	21	Hex	3	M B R SF	RT PF PC
HGSF-13824-A	3/4	Square	3/4	Hex	3.125	SF	RT PF PC
HGSFNC-14524	3/4	Square	3/4	Hex	4	SF	RT PF PC
MHGNC-14624	3/4	Square	3/4	Hex	4	M TD	RT PF PC
HGSFNC-3028	3/4	Square	7/8	Hex	4	SF	RT PF PC
VGNC-105-17MM	3/4	Square	17	Hex	2.375	TD	RT PF PC
VGNC-108-17MM	3/4	Square	17	Hex	3.25	TD	RT PF PC
VGSFNC-109-17MM	3/4	Square	17	Hex	4	SF TD	RT PF PC
VGNC-28-19MM	3/4	Square	19	Hex	2.375	TD	RT PF PC
VGSFNC-34-19MM	3/4	Square	19	Hex	3.25	SF TD	RT PF PC
VGSFNC-56-21MM	3/4	Square	21	Hex	4	SF TD	RT PF PC
RMBVGSFNC-53-21MM	3/4	Square	21	Hex	4.5	M B R SF	RT PF PC
VGSFNC-55-21MM	3/4	Square	21	Hex	6	SF	RT PF
VGFLNC-40-22MM	3/4	Square	22	Hex	2.5	FL	RT PF PC
VGSFNC-40-22MM	3/4	Square	22	Hex	2.5	SF	RT PF PC
MBRVGNC-34-22MM	3/4	Square	22	Hex	4	M B R	RT PF PC
RMBRVGSFNC-38-22MM	3/4	Square	22	Hex	4	M B R SF	RT PF PC
VGSFNC-39-22MM	3/4	Square	22	Hex	4	SF TD	RT PF PC

**Fractions represent inches. Integers represent metric (mm).

*Features Abbreviations	ER Embedded Rare Earth Magnets	LC Limited Clearance	R Rare Earth Magnet	SF Surface Drive
B Bolt Clearance	ET Exposed Tip	M Magnetic	RE Retractable / Finder Sleeve	SM Strip Magnet
DM Donut Magnet	FL Fast Lead	P Pinned	RNT Removable Nylon Tip	TD Turned OD
EC Extension Cover Only	FS Free Spinning	PC Partially Covered	RT Recessed Tip	U Universal (Swivel)
EM Embedded Magnets	FT Flush to Tip	PF Press Fit	SB Shallow Broach	

Covered Socket with Extension Complete Assemblies *(Includes Tool and Anti-Mar Cover)*

Complete Assembly Ordering Number	Extension				Socket				Cover Features*
	Drive Size	Drive Type	Sex	Length (in.)	Opening Size	Opening Type	Length (in.)	Features*	
MBVANC-85-8MM	1/4	Square	F	3	8	Hex	1.75	M B	FS
MVMNC-8-7MM	1/4	Hex	M	6	7	Hex	0.875	M	FS
MRVMNC-9-7MM	1/4	Hex	M	8	7	Hex	0.875	R	FS
MVMNC-9-7MM	1/4	Hex	M	8	7	Hex	0.875	M	FS
MVMNC-61-10MM	1/4	Hex	M	1.625	10	Hex	1.25	M	FS
MRSFVMNC-58-10MM	1/4	Hex	M	3	10	Hex	1.75	R SF	FS
MVMSFNC-62-10MM	1/4	Hex	M	4	10	Hex	1.75	M SF	FS
MBVMNC-63-10MM	1/4	Hex	M	6	10	Hex	1.75	M B	FS
MBVMNC-65-10MM	1/4	Hex	M	6	10	Hex	2	M B	FS
MVMNC-60-10MM	1/4	Hex	M	6	10	Hex	1	M	FS
MVMSFNC-60-10MM	1/4	Hex	M	6	10	Hex	1	M SF	FS
SMVMNC-65-10MM	1/4	Hex	M	6	10	Hex	2	SM	FS
VMNC-70-10MM	1/4	Hex	M	6	10	Hex	1.75		FS
MBVMNC-64-10MM	1/4	Hex	M	8	10	Hex	1.75	M B	FS
VMNC-6-13MM	1/4	Hex	M	1.625	13	Hex	2		FS
MBVMNC-5-13MM	1/4	Hex	M	2	13	Hex	3.5	M B	FS
MVMNC-1-15MM	1/4	Hex	M	1.625	15	Hex	2	M	FS
VMNC-2-15MM	1/4	Hex	M	1.625	15	Hex	2		FS
VMNC-1-16MM	1/4	Hex	M	1.625	16	Hex	2		FS
VMNC-2-19MM	1/4	Hex	M	1.625	19	Hex	2		FS
VMNC-1-21MM	1/4	Hex	M	2	21	Hex	1.5		FS
VCNC-248-8MM	3/8	Square	F	3	8	Hex	1.25	M	FS
MVCNC-752-10MM	3/8	Square	F	2	10	Hex	1.25	M	FS
MBVCNC-754-10MM	3/8	Square	F	3	10	Hex	2	M B	FS
MRSFVCNC741-10M-NU	3/8	Square	F	3	10	Hex	1.75	R SF	FS
MRVCSFNC-724-10MM	3/8	Square	F	3	10	Hex	2	R SF	FS
MVCNC-710-10MM	3/8	Square	F	3	10	Hex	1.25	M	FS
MVCNC-750-10MM	3/8	Square	F	3	10	Hex	1.25	M	FS
VCNC-751-10MM	3/8	Square	F	3	10	Hex	1.25		FS
MBVCNC-747-10MM	3/8	Square	F	4	10	Hex	3.5	M B	FS
MBVCNC-762-10MM	3/8	Square	F	4	10	Hex	2	M B	FS
MVCNC-748-10MM	3/8	Square	F	4	10	Hex	1.25	M	FS
MVCNC-755-10MM	3/8	Square	F	4	10	Hex	1.25	M	FS
VCNC-758-10MM	3/8	Square	F	4	10	Hex	0.875	M	FS
RMBVCNC-728-10MM	3/8	Square	F	5	10	Hex	2	R B	FS
MVCNC-702-10MM	3/8	Square	F	6	10	Hex	1.25	M	FS
MVCNC-702-10MM-NA	3/8	Square	F	6	10	Hex	1.25	M	FS
MVCNC-702-10MM-NU	3/8	Square	F	6	10	Hex	1.25	M	FS
MVCNC-746-10MM	3/8	Square	F	6	10	Hex	1.25	M	FS
SMVCNC-764-10MM	3/8	Square	F	6	10	Hex	2	SM	FS
MBVCNC-745-10MM	3/8	Square	F	8	10	Hex	3.5	M B	FS
MVCNC-756-10MM	3/8	Square	F	8	10	Hex	1.25	M	FS
MVCNC-759-10MM	3/8	Square	F	10	10	Hex	0.875	M	FS
RMBVCNC-727-10MM	3/8	Square	F	10	10	Hex	2	R B	FS
MBVCNC-749-10MM	3/8	Square	F	12	10	Hex	3.5	M B	FS
MVCNC-766-10MM	3/8	Square	F	12	10	Hex	2	M	FS
SMVCNC-765-10MM	3/8	Square	F	12	10	Hex	2	SM	FS
VCNC-757-10MM	3/8	Square	F	12	10	Hex	1.25		FS
MBSFVCNC-653-13MM	3/8	Square	F	12	13	Hex	2	M B SF	FS
MBVCNC-647-13MM	3/8	Square	F	2	13	Hex	3.5	M B	FS
MBVCNC-645-13MM	3/8	Square	F	3	13	Hex	3.5	M B	FS
MVCNC-648-13MM	3/8	Square	F	3	13	Hex	1.5	M	FS
SMVCSFNCNU-624-13M	3/8	Square	F	3	13	Hex	1.5	RE SM SF	FS
MBVCNC-651-13MM	3/8	Square	F	4	13	Hex	2	M B	FS
MBVCNC-644-13MM	3/8	Square	F	6	13	Hex	3.5	M B	FS
MRVCNC-628-13MM-NU	3/8	Square	F	6	13	Hex	1.5	R	FS
MRVCNC-662-13MM-NA	3/8	Square	F	6	13	Hex	1.5	R	FS
MSFVCNC-652-13MM	3/8	Square	F	6	13	Hex	2	M SF	FS
MVCNC-649-13MM	3/8	Square	F	6	13	Hex	2	M	FS

Continued on next page.

*Features Abbreviations	ER Embedded Rare Earth Magnets	LC Limited Clearance	R Rare Earth Magnet	SF Surface Drive
B Bolt Clearance	ET Exposed Tip	M Magnetic	RE Retractable / Finder Sleeve	SM Strip Magnet
DM Donut Magnet	FL Fast Lead	P Pinned	RNT Removable Nylon Tip	TD Turned OD
EC Extension Cover Only	FS Free Spinning	PC Partially Covered	RT Recessed Tip	U Universal (Swivel)
EM Embedded Magnets	FT Flush to Tip	PF Press Fit	SB Shallow Broach	

Covered Socket with Extension Complete Assemblies – continued *(Includes Tool and Anti-Mar Cover)*

Complete Assembly Ordering Number	Extension				Socket				Cover Features*
	Drive Size	Drive Type	Sex	Length (in.)	Opening Size	Opening Type	Length (in.)	Features*	
MVCNCNU-625-13MM	3/8	Square	F	6	13	Hex	1.5	M	FS
MBVCNC-652-13MM	3/8	Square	F	8	13	Hex	2	M B	FS
SMSFVCNC637-13M-NU	3/8	Square	F	8	13	Hex	2	SM SF	FS
MBVCNC-654-13MM	3/8	Square	F	10	13	Hex	2	M B	FS
MVCNC-646-13MM	3/8	Square	F	10	13	Hex	1.5	M	FS
MBVCNC-653-13MM	3/8	Square	F	12	13	Hex	2	M B	FS
MVCNC-650-13MM	3/8	Square	F	12	13	Hex	1.5	M	FS
VCNC-653-13MM	3/8	Square	F	12	13	Hex	2		FS
VCNC-239-14MM	3/8	Square	F	10	14	Hex	2		FS
MBVCNC-135-15MM	3/8	Square	F	6	15	Hex	2	M B	FS
VCSFNC-132-15MM-NA	3/8	Square	F	12	15	Hex	1.5	SF	FS
DMVCSFNC-623-13MM	7/16	Square	F	3	13	Hex	1	DM SF	RE
MBVNNC-1-13MM	7/16	Hex	M	8	13	Hex	2	M B	FS
MRVNNC-1-15MM	7/16	Hex	M	6	15	Hex	3.25	R	FS
MVENC-1-7MM	1/2	Square	F	1.5	7	Hex	1.25	M	FS
MVENC-143-10MM	1/2	Square	F	1.5	10	Hex	1.25	M	FS
MBRVENC-108-18MM	1/2	Square	F	8	18	Hex	2.25	R B	FS
MRVENC-101-18MM	1/2	Square	F	20	18	Hex	1.5	R SF	FS

Covered Socket with Extension & Adapter Complete Assemblies *(Includes Tool and Anti-Mar Cover)*

Complete Assembly Ordering Number	Adapter				Extension				Socket			Adapter Features*	Socket Features*	Cover Features*
	Drive Size	Drive Type	Sex	Length (in.)	Drive Size	Drive Type	Sex	Length (in.)	Opening Size**	Opening Type	Length (in.)			
MRVANC-97-7MM	1/4	Square	F	1.5	1/4	Hex	M	6	7	Hex	0.875	QR	R	FS
MVCNC-760-10MM	3/8	Square	F	1.75	1/4	Hex	M	6	10	Hex	1	QR	M	FS
MBVCNC-763-10MM	3/8	Square	F	2	7/16	Hex	M	8	10	Hex	2	QR	B, M	FS
MVCNC-761-10MM	3/8	Square	F	2	7/16	Hex	M	8	10	Hex	1.25	QR	M	FS
VCNC-761-10MM	3/8	Square	F	2	7/16	Hex	M	8	10	Hex	1.25	QR		FS
RCSFNC-1314-9	3/8	Square	F	1.5	1/4	Hex	M	9	7/16	Hex	1.062	P	U, SF	EC, FS
RMSFNC-214-9	-	-	-	-	1/4	Hex	M	9	7/16	Hex	1.062	P	U, SF	EC, FS
RCNC-2616-9	3/8	Square	F	1.5	1/4	Hex	M	9	1/2	Hex	1	P	U	EC, FS
RCSFNC-2816-9	3/8	Square	F	1.5	1/4	Hex	M	9	1/2	Hex	1.062	P	U, SF	EC, FS

**Fractions represent inches. Integers represent metric (mm).

If you have an assembly application that requires special protection, simply fill out the appropriate attached "Quotation Worksheet" and fax it to your Apex Representative. Indicate that a nylon coating is needed. Or, you can visit our website at www.apex-tools.com and submit a "Quotation Worksheet" electronically. Either way, a quote will be generated promptly.

If you need more information or would like to have an Apex Representative contact you, please call Customer Service toll free at 1-800-845-5629.

Apex also offers μ -Guard Protective Covers and Free-Spin Covers. For a copy of the latest brochures, contact your Apex distributor or visit our website www.apex-tools.com.



Screwdriver Bit Quotation Worksheet

For quotation only. Not an order.

NAME _____ TITLE _____

COMPANY _____

ADDRESS _____ CITY _____ STATE _____ ZIP _____

E-MAIL _____ PHONE _____ FAX _____

Style	Point Size	Style	Point Size	Style	Point Size	Style	Point Size
<input type="checkbox"/> Phillips	_____	<input type="checkbox"/> Torx®	_____	<input type="checkbox"/> Frearson/Reed Prince	_____	<input type="checkbox"/> Torx-Set®	_____
<input type="checkbox"/> Phillips ACR®	_____	<input type="checkbox"/> Torx Plus®	_____	<input type="checkbox"/> Socket Head	_____	<input type="checkbox"/> Triple Square	_____
<input type="checkbox"/> Slotted	_____	<input type="checkbox"/> Pozidriv®	_____	<input type="checkbox"/> Socket/Robertson	_____	<input type="checkbox"/> Tri-Wing	_____
						<input type="checkbox"/> Other _____	

Drive Type **Size**

Hex Insert _____

Hex Power _____

Threaded _____

Female Square _____

Other _____

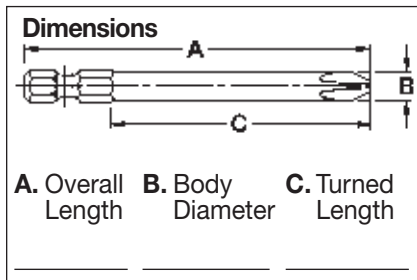
Nylon Covers Requirements:

Components To Be Covered

- Bit only
- Bit and Bit Holder

Cover Features

- Flush with tip of bit
- Exposed tip of bit
- Retractable
- Embedded magnets
- Press fit
- Free-spinning (able to spin independently of part being covered)
- O.D. limitations (must specify) _____
- Other considerations (must specify) _____



Bit Holder Styles For Hex Insert Bits

- Magnetic
- O-Ring Retention
- Standard (Retaining Groove)
- Quick Release
- Other _____

Bit Holder Drive Types **Size**

- Hex Drive _____
- Female Square _____
- Other _____

Additional Specifications _____

Quantity _____

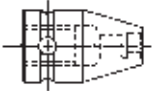
Applied or Driving Torque _____

Sockets Quotation Worksheet

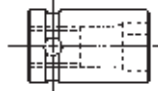
For quotation only. Not an order.

NAME _____	TITLE _____		
COMPANY _____			
ADDRESS _____	CITY _____	STATE _____	ZIP _____
E-MAIL _____	PHONE _____	FAX _____	

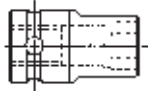
Socket Type



Type A (tapered)

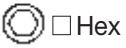


Type B (straight)



Type C (shouldered)

Broach Opening



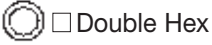
Hex



Double Square



Torx®



Double Hex



Fast Lead

Other



Square



Surface Drive

Magnetic

Magnetic Bolt Clearance (MB)

Magnetic Bolt Clearance, with retaining ring (RMB)

Strip Magnet (SM)

Fixed Magnet (M)

Non-magnetic

Drive Configuration

DIN Standard

No DIN groove

Cross Hole (one wall only)

Extensions

Hex Drive _____

Female Square _____

Other _____

Size

Extension Length

No extension required

Additional Specifications _____

Quantity _____

Applied or Driving Torque _____



Cooper Power Tools
P.O. Box 1410
Lexington, SC 29071-1410
USA
Phone: 800-845-5629
Fax: 803-359-0822

Cooper Power Tools
5925 McLaughlin Road
Mississauga, Ontario
Canada L5R 1B8
Phone: (905) 501-4785
Fax: (905) 501-4786

Cooper Power Tools de México S.A. de C.V.
Libramiento La Joya No. 1
Bodega No. 2
Esq. Politécnico
Barrio San José
Cuautitlán, Edo de México
C.P. 54870
Phone: (011) 525 5899 9510
Fax: (011) 525 5870 5012

Cooper Tools Industrial Ltda.
Av. Liberdade, 4055
Zona Industrial - Iporanga
18087-170 Sorocaba, SP
Brazil
Tel: +55-15-3238-3929
Fax: +55-15-228-3260

Cooper Power Tools SAS
Zone industrielle - B.P. 28
77831 Ozoir-la-Ferrière Cedex
France
Téléphone: +33-1-6443-2200
Téléfax: +33-1-6440-1717

Cooper Power Tools GmbH & Company
Postfach 30
D-73461 Westhausen
Germany
Phone: +49-7363-810
Fax: +49-7363-81222

Cooper Tools Hungária Kft.
Berkenyefa sor 7
H-9027 Győr
Hungary
Tel: +36 96 505 300
Fax: +36 96 505 301

Cooper (China) Co., Ltd.
18th Floor Yu An Building
738 Dongfang Road
Pudong, Shanghai 200122
China
Phone: +86 21 5831 6805
Fax: +86 21 5831 6762

Dimensions

A. Square drive _____

B. Drive end diameter _____

C. Overall length _____

D. Taper or shoulder length _____

E. Bolt clearance depth _____

F. Broach depth _____

G. Nose end diameter _____

H. Broach opening _____

I. Torx® size _____

Nylon Covers Requirements:

Components To Be Covered

- Socket only
- Socket and Extension

Cover Features

- Exposed tip of socket hex
- Recessed tip of socket hex
- Flush tip of socket hex
- Press fit
- Free-spinning (able to spin independently of part being covered)
- O.D. limitations (must specify) _____
- Other considerations (must specify) _____

Visit us online at www.apex-tools.com