

## BUCKEYE®

### 21LD-800 Series

- .4 Horsepower
- 130 lbs. Thrust (578 N) @ 90 PSI
- 1-1/4" (32mm) & 2" (51mm) Stroke
- Cycle completion signal

### 21LD-870 Series Automatic

- Internal rear-head valves
- Automatic retract
- Manual start & retract
- Remote start
- 1" (25mm) stroke hydraulic dashpot standard



Models		Free Speed RPM	Nominal Drilling Capacity						Thrust @ 90PSI		Standard Chuck Capacity		Spindle
Stroke Length			Mild Steel		Aluminum		Wood		lb.	N	in.	mm	
1 1/4" (32mm)	2" (51mm)		in.	mm	in.	mm	in.	mm					
<b>Automatic</b>													
21LD-870	21LD-800	22000	-	-	3/32	2.4	-	-	130	578	5/32	4.0	#0 JT
21LD-871	21LD-801	4750	1/8	3.2	3/16	4.8	3/16	4.8	130	578	1/4	6.4	3/8"-24
21LD-872	21LD-802	3500	5/32	4.0	7/32	5.6	1/4	6.4	130	578	1/4	6.4	3/8"-24
21LD-873	21LD-803	2800	3/16	4.8	1/4	6.4	5/16	7.9	130	578	1/4	6.4	3/8"-24
21LD-875	21LD-805	900	1/4	6.4	1/4	6.4	1/2	12.7	130	578	1/4	6.4	3/8"-24

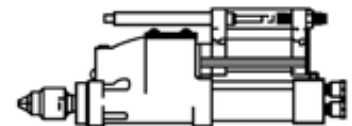
#### Specifications:

Recommended Air Pressure:	90 PSI (6.2 bar)
Air Inlet Size:	1/4" N.P.T.
CFM Rating:	14 @ Free Speed
Remote Control Ports:	1/8" N.P.T.
Recommended Hose Size:	3/8" (9.5 mm) I.D.
Offset (side-to-center):	7/8" (22.2 mm)
Tool Weight (maximum):	5.6 lbs. (2.5 kg)
Optional Chucks:	page 26

**Standard Equipment:** The above models are supplied standard with a 1" stroke hydraulic dashpot, 1024850. See page 25 for more information.

#### Extra Cost Accessories:

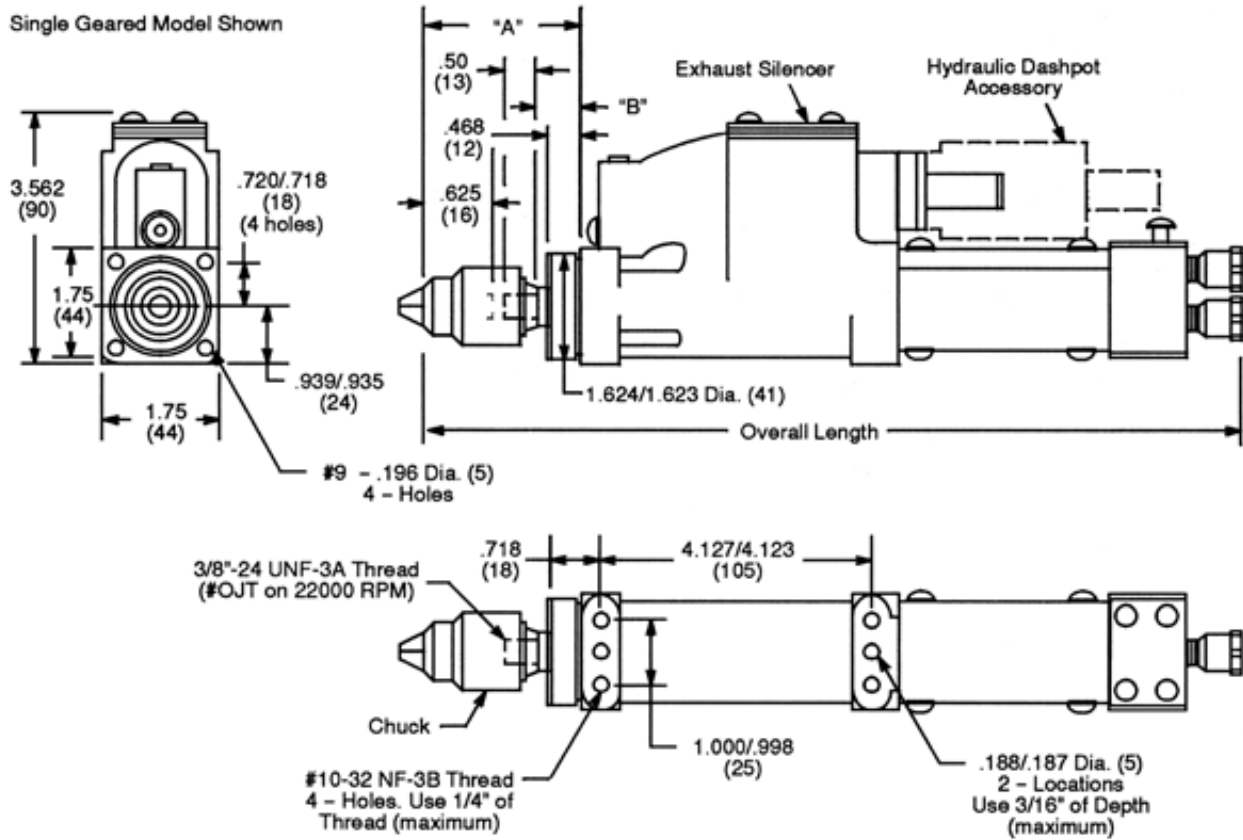
Optional Outboard Dashpots:	page 25
L - Bracket:	1021862
Aircraft Noses:	page 31
Collet Type Chucks:	page 26
Various 3-Jawed Chucks:	page 27



## 21L Series Mounting Dimensions

Designer's full scale dimensional layouts available online at [www.cooperpowertools.com](http://www.cooperpowertools.com).

Single Geared Model Shown



Free Speed of Tool (RPM)	Overall Length				"A"		"B"	
	Stroke Length							
	1 1/4" (32mm)		2" (51mm)		in.	mm	in.	mm
22000	11.50	292	12.13	308	1.92	49	0.62	16
4750	11.69	297	12.44	316	2.19	56	0.62	16
3500	11.69	297	12.44	316	2.19	56	0.62	16
2800	11.69	297	12.44	316	2.19	56	0.62	16
900	12.75	324	13.50	343	3.28	83	1.71	43