

## BUCKEYE®

### 42LD-800 Series

- .9 Horsepower
- 250 lbs. Thrust (1111 N) @ 90 PSI
- 3" (76mm) Stroke
- Cycle completion signal
- Internal rear-head valves
- Automatic retract
- Manual start & retract
- Remote start
- 2" (51mm) stroke hydraulic dashpot standard



Models Stroke Length	Free Speed RPM	Nominal Drilling Capacity						Thrust @ 90PSI		Standard Chuck Capacity		Spindle
		Mild Steel		Aluminum		Wood		lb.	N	in.	mm	
		in.	mm	in.	mm	in.	mm					
3" (76mm)												
<b>Automatic</b>												
42LD-808	6000	1/8	3.2	1/8	3.2	3/16	4.8	250	1111	3/8	9.5	3/8"-24
42LD-801	5000	3/16	4.8	1/4	6.4	1/4	6.4	250	1111	3/8	9.5	3/8"-24
42LD-802	3000	1/4	6.4	3/8	9.5	3/8	9.5	250	1111	3/8	9.5	3/8"-24
42LD-803	1850	3/8	7.9	3/8	9.5	7/8	22.2	250	1111	3/8	9.5	3/8"-24
42LD-805	1100	3/8	9.5	3/8	9.5	1	25.4	250	1111	3/8	9.5	3/8"-24
42LD-806	750	3/8	9.5	3/8	9.5	1	25.4	250	1111	3/8	9.5	3/8"-24
42LD-807	450	3/8	9.5	3/8	9.5	1	25.4	250	1111	3/8	9.5	3/8"-24

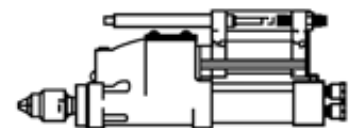
#### Specifications:

Recommended Air Pressure:	90 PSI (6.2 bar)
Air Inlet Size:	1/4" N.P.T.
CFM Rating:	38 @ Free Speed
Remote Control Ports:	1/8" N.P.T.
Recommended Hose Size:	3/8" (9.5 mm) I.D.
Offset (side-to-center):	1" (25.4 mm)
Tool Weight (maximum):	9.6 lbs. (4.4 kg)
Optional Chucks:	page 26

**Standard Equipment:** The above models are supplied standard with 2" stroke hydraulic dashpot, 1024852. See page 25 for more information.

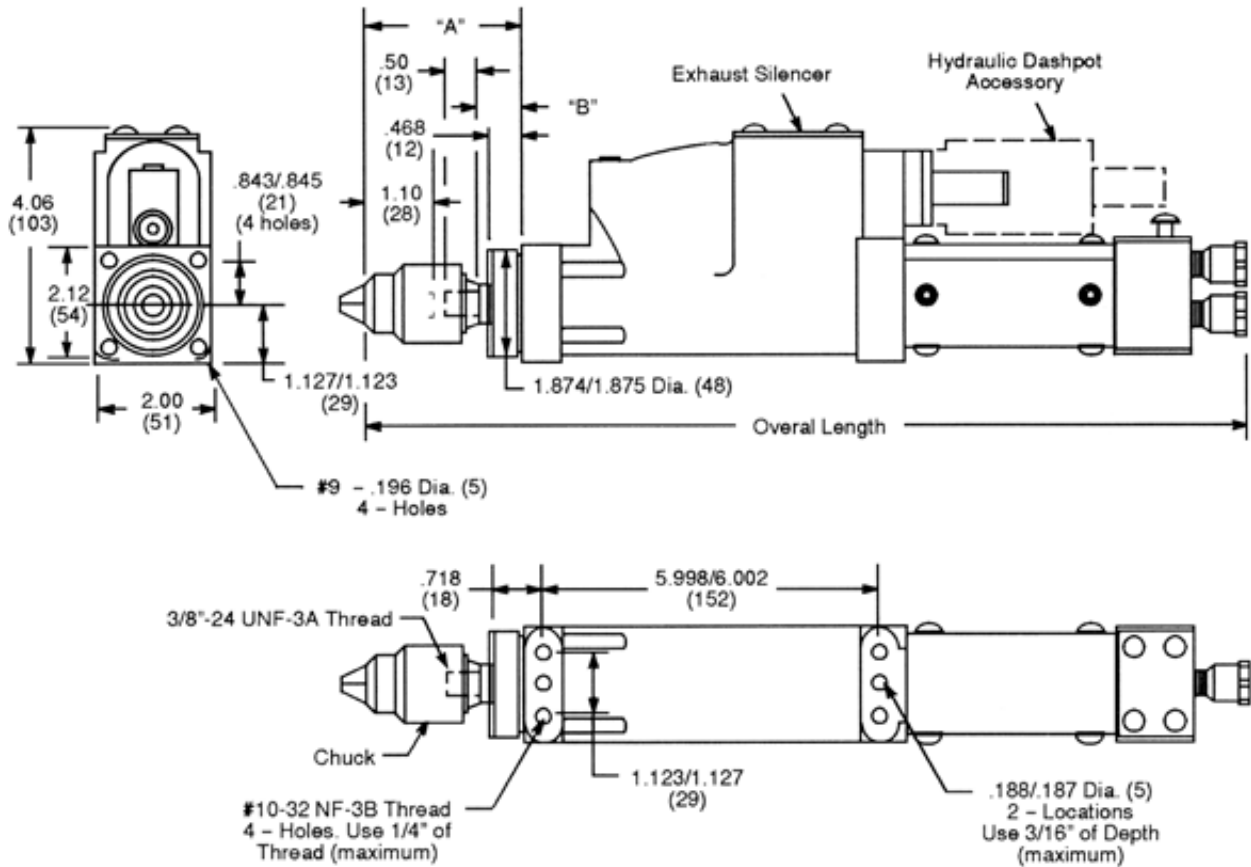
#### Extra Cost Accessories:

Optional Outboard Dashpots:	page 25
L - Bracket:	1023793
Aircraft Noses:	page 31
Collet Type Chucks:	page 26
Various 3-Jawed Chucks:	page 27



## 42L Series Mounting Dimensions

Designer's full scale dimensional layouts available online at [www.cooperpowertools.com](http://www.cooperpowertools.com).



Free Speed of Tool (RPM)	Overall Length		"A"		"B"	
	Stroke Length					
	in.	mm	in.	mm	in.	mm
9000	17.06	433	3.97	101	2.43	62
6000	16.12	410	2.95	75	0.76	19
5000	16.12	410	2.95	75	0.76	19
3000	16.12	410	2.95	75	0.76	19
1850	16.12	410	2.95	75	0.76	19
1100	16.62	422	3.45	87	1.26	32
750	16.62	422	3.45	87	1.26	32
450	16.62	422	3.45	87	1.26	32