

## BUCKEYE®

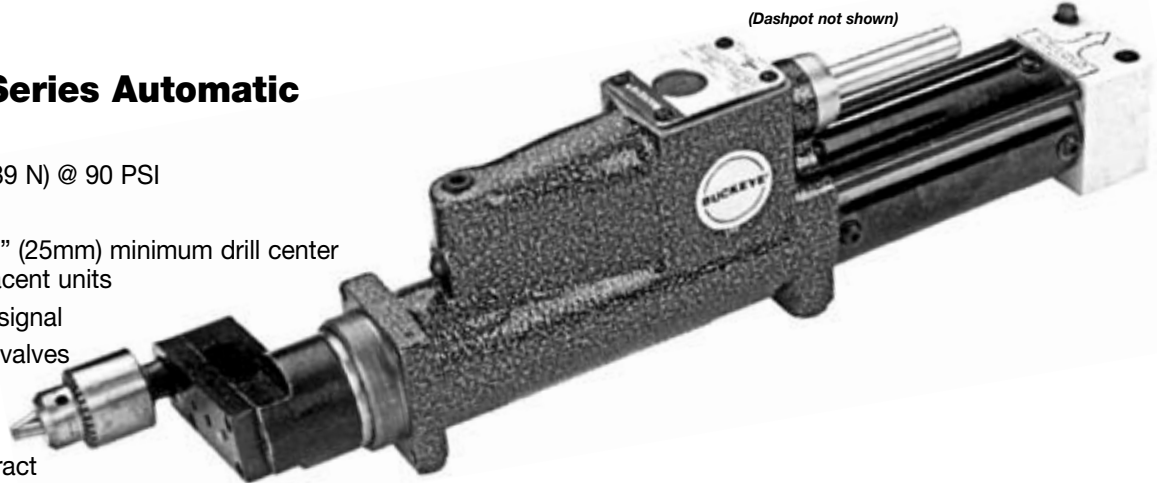
### 21LDH-800 Series Automatic

- .4 Horsepower
- 130 lbs. Thrust (578 N) @ 90 PSI
- 2" (51mm) Stroke
- Offset head with 1" (25mm) minimum drill center potential with adjacent units
- Cycle completion signal
- Internal rear-head valves
- Automatic retract
- Manual start & retract
- Remote start
- 1" (25mm) stroke hydraulic dashpot standard



### 31LDH-800 Series Automatic

- .6 Horsepower
- 200 lbs. Thrust (889 N) @ 90 PSI
- 3" (76mm) Stroke
- Offset head with 1" (25mm) minimum drill center potential with adjacent units
- Cycle completion signal
- Internal rear-head valves
- Automatic retract
- Remote start
- Manual start & retract
- 2" (51mm) stroke hydraulic dashpot standard



Models		Free Speed RPM	Nominal Drilling Capacity						Thrust @ 90PSI		Standard Chuck Capacity		Spindle
Stroke Length			Mild Steel		Aluminum		Wood		lb.	N	in.	mm	
2" (51mm)	3" (76mm)		in.	mm	in.	mm	in.	mm					
<b>Automatic</b>													
21LDH-802		3500	5/32	4.0	7/32	5.6	1/4	6.4	130	578	1/4	6.4	3/8"-24
21LDH-803		2800	3/16	4.8	1/4	6.4	5/16	7.9	130	578	1/4	6.4	3/8"-24
	31LDH-803	1850	3/16	4.8	3/8	9.5	1/2	12.7	200	889	3/8	9.5	3/8"-24
	31LDH-806	750	3/8	9.5	3/8	9.5	7/8	22.2	200	889	3/8	9.5	3/8"-24
	31LDH-807	450	3/8	9.5	3/8	9.5	1	25.4	200	889	3/8	9.5	3/8"-24

#### Specifications:

Recommended Air Pressure: 90 PSI (6.2 bar)  
 Air Inlet Size: 1/4" N.P.T.  
 CFM Rating: 19 @ Free Speed (21 series)  
 22 @ Free Speed (31 series)  
 Remote Control Ports: 1/8" N.P.T.  
 Recommended Hose Size: 3/8" (9.5 mm) I.D.  
 Tool Weight (maximum): 11.25 lbs. (5.1 kg)  
 Optional Chucks: page 26

#### Standard Equipment:

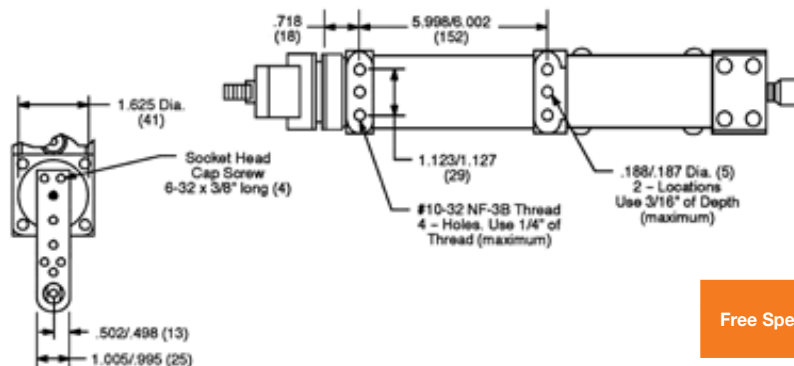
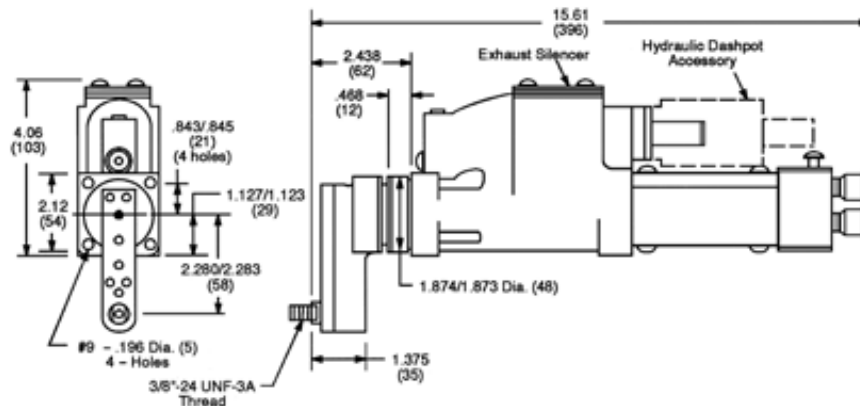
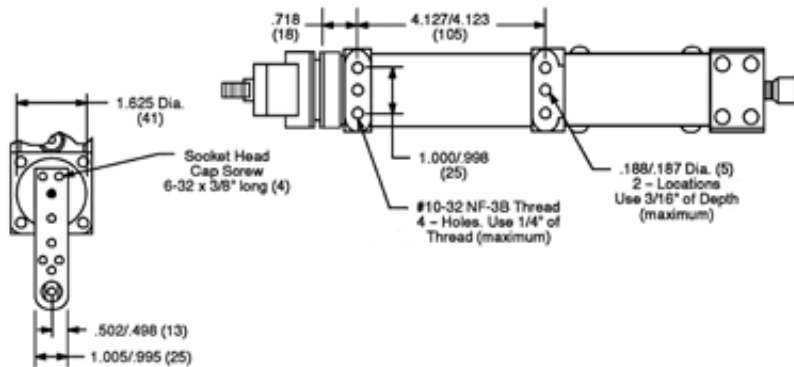
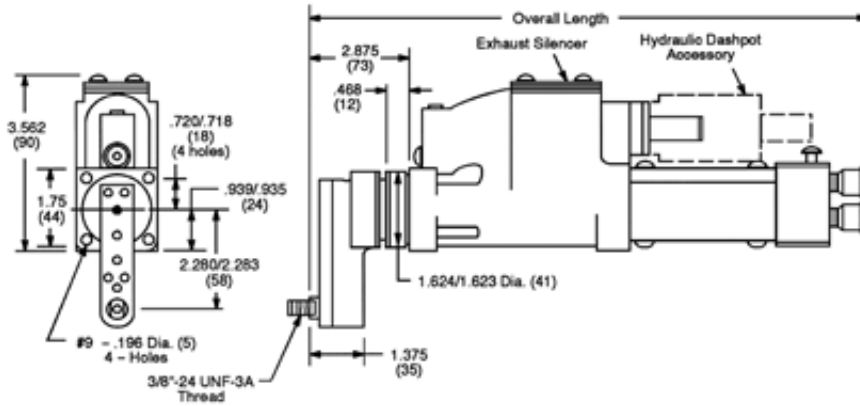
21LDH Series: Supplied standard with 1" stroke hydraulic dashpot, 1024850.  
 31LDH Series: Supplied standard with 2" stroke hydraulic dashpot, 1024852.

#### Extra Cost Accessories:

Optional Outboard Dashpots: page 25  
 L - Bracket 21-LDH: 1021862  
 L - Bracket 31-LDH: 1023793  
 Aircraft Noses: page 31  
 Collet Type Chucks: page 26  
 Various 3-Jawed Chucks: page 27

## 21LH Series Mounting Dimensions

Designer's full scale dimensional layouts available online at [www.cooperpowertools.com](http://www.cooperpowertools.com).



## 31LH Series Mounting Dimensions

Designer's full scale dimensional layouts available online at [www.cooperpowertools.com](http://www.cooperpowertools.com).

Free Speed of Tool (RPM)	Overall Length	
	Stroke Length 2" (51mm)	
	in.	mm
4750	13.13	333
3500	13.13	333
2800	13.13	333
900	13.09	332