

Self-Feed Tools Accessories

Chuck Body Assemblies

When ordering Chuck Body assemblies with the tool, add one of the three termination codes to the tool model (36, 01, or 62) as described below.

EXAMPLE: 21LD-802-01 would include 1/4" collet 208. Collet size variations from standard must be specified as a second line item order.



| Part No. | Std. Collet | Mtg. Thread | Length | Collet Range | Tool Used On |
|----------|-------------|-------------|--------|--------------|--------------|
|----------|-------------|-------------|--------|--------------|--------------|

300 Series - Termination 36

| | | | | | |
|---------|------|---------|-------|----------|---------------|
| 14-3050 | 1/4" | 3/8"-24 | 2.75" | 3/64-1/4 | 21L, 31L, 42L |
|---------|------|---------|-------|----------|---------------|

200 Series - Termination 01

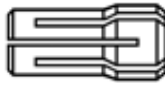
| | | | | | |
|---------|------|---------|--------|---------|---------------|
| 14-1151 | 1/4" | 3/8"-24 | 1.975" | 1/8-3/8 | 21L, 31L, 42L |
| 14-2131 | 1/4" | 1/2"-20 | 1.975" | 1/8-3/8 | 46L |

"K" Series - Termination 62

| | | | | | |
|---------|------|---------|-------|---------|-----|
| 14-2132 | 3/8" | 1/2"-20 | 2.75" | 1/8-1/2 | 46L |
|---------|------|---------|-------|---------|-----|

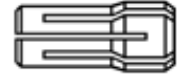
Series 200 Collets

When ordering a tool with a collet other than the standard included with one of the three termination codes, you must still order the tool with one of the termination codes plus a second item with the part number of the actual collet you need.



| Termination 01 | | | | | |
|----------------|--------|----------|-----|---------|-----|
| Part No. | Size | Capacity | | | |
| | | Minimum | | Maximum | |
| | | in. | mm | in. | mm |
| 203 | 3/32" | 1/16 | 1.6 | 3/32 | 2.4 |
| 204 | 1/8" | 3/32 | 2.4 | 1/8 | 3.2 |
| 205 | 5/32" | 1/8 | 3.2 | 5/32 | 4.0 |
| 206 | 3/16" | 5/32 | 4.0 | 3/16 | 4.8 |
| 207 | 7/32" | 3/16 | 4.8 | 7/32 | 5.6 |
| 208 | 1/4" | 7/32 | 5.6 | 1/4 | 6.4 |
| 209 | 9/32" | 1/4 | 6.4 | 9/32 | 7.1 |
| 210 | 5/16" | 9/32 | 7.1 | 5/16 | 7.9 |
| 211 | 11/32" | 5/16 | 7.9 | 11/32 | 8.7 |
| 212 | 3/8" | 11/32 | 8.7 | 3/8 | 9.5 |
| 213 | 6 mm | - | 5.2 | - | 6.0 |
| 216 | 8 mm | - | 7.2 | - | 6.0 |

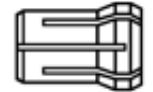
Series 300 Collets



When ordering a tool with a collet other than the standard included with one of the three termination codes, you must still order the tool with one of the termination codes plus a second item with the part number of the actual collet you need.

| Termination 36 | | | | | |
|----------------|-------|----------|-----|---------|-----|
| Part No. | Size | Capacity | | | |
| | | Minimum | | Maximum | |
| | | in. | mm | in. | mm |
| 301 | 3/64" | 1/64 | 0.4 | 3/64 | 1.2 |
| 302 | 5/64" | 3/64 | 1.2 | 5/64 | 2.0 |
| 303 | 3/32" | 1/16 | 1.6 | 3/32 | 2.4 |
| 304 | 1/8" | 3/32 | 2.4 | 1/8 | 3.2 |
| 305 | 5/32" | 1/8 | 3.2 | 5/32 | 4.0 |
| 306 | 3/16" | 5/32 | 4.0 | 3/16 | 4.8 |
| 307 | 7/32" | 3/16 | 4.8 | 7/32 | 5.6 |
| 308 | 1/4" | 7/32 | 5.6 | 1/4 | 6.4 |
| 310 | 6 mm | - | 5.2 | - | 6.0 |
| 311 | 3 mm | - | 2.2 | - | - |

Series "K" Collets



When ordering a tool with a collet other than the standard included with one of the three termination codes, you must still order the tool with one of the termination codes plus a second item with the part number of the actual collet you need.

| Termination 62 | | | | | |
|----------------|-------|----------|------|---------|------|
| Part No. | Size | Capacity | | | |
| | | Minimum | | Maximum | |
| | | in. | mm | in. | mm |
| 120 | 1/8" | 3/32 | 2.4 | 1/8 | 3.2 |
| 121 | 3/16" | 5/32 | 4.0 | 3/16 | 4.8 |
| 122 | 1/4" | 7/32 | 5.6 | 1/4 | 6.4 |
| 123 | 5/16" | 9/32 | 7.1 | 5/16 | 7.9 |
| 124 | 3/8" | 11/32 | 8.7 | 3/8 | 9.5 |
| 125 | 7/16" | 13/32 | 10.3 | 7/16 | 11.1 |
| 126 | 1/2" | 15/32 | 11.9 | 1/2 | 12.7 |
| 127 | 9/16" | 17/32 | 13.5 | 9/16 | 14.3 |
| 133† | 6mm | - | 5.2 | - | 6.0 |
| 134 | 8mm | - | 7.2 | - | 8.0 |
| 135 | 10mm | - | 9.2 | - | 10.0 |
| 136† | 12mm | - | 11.2 | - | 12.0 |

† Quotation required