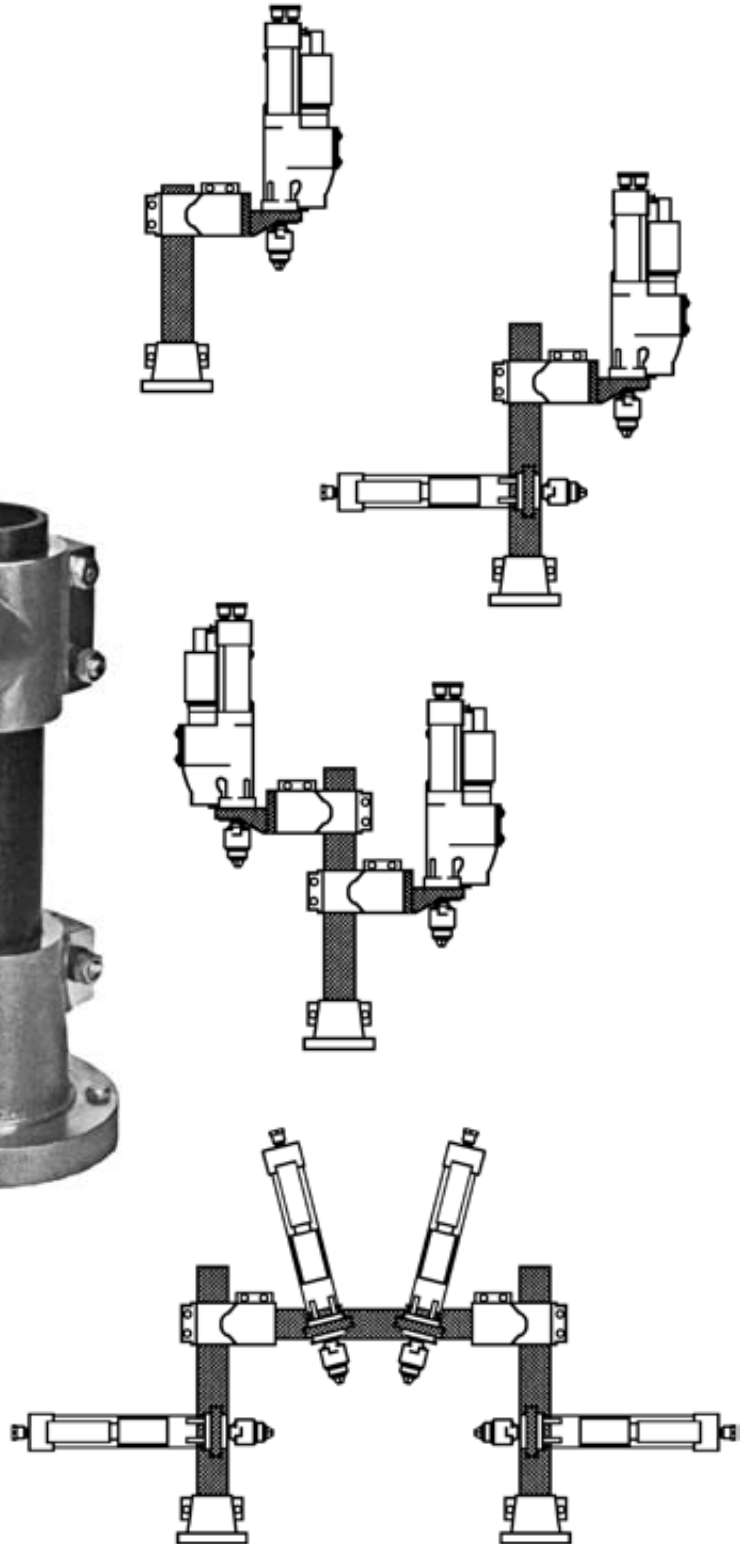
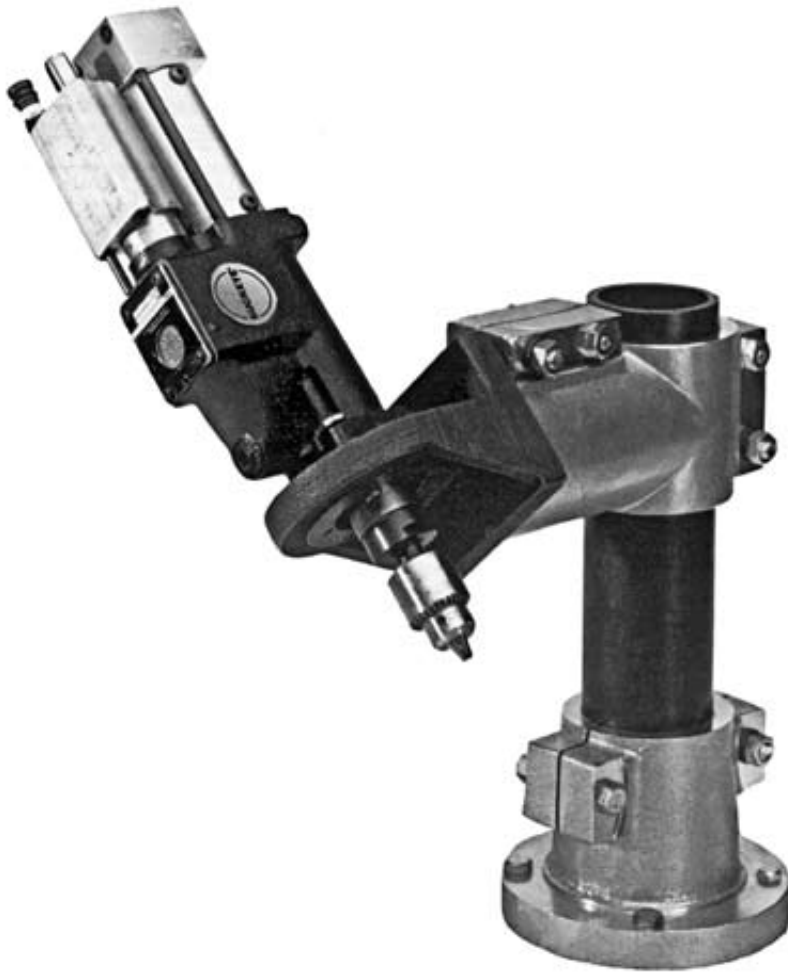


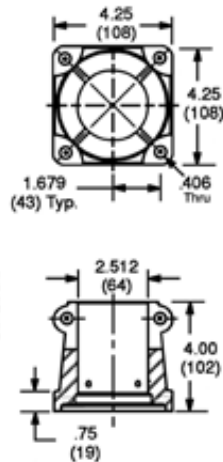
# Fixture Post Mounting Components

Cooper Power Tools' fixture post mounting components provide the mounting versatility to permit the positioning of Buckeye self-feed tools to meet your application requirements.

The illustrations below depict only a few of the endless configurations possible with these fixture post mounting components.

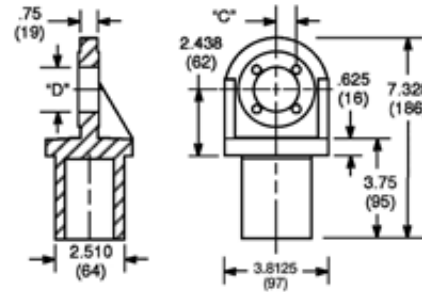


## 1110493 Base Mount Assembly



## Tool Mount Assembly

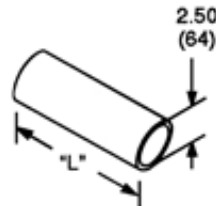
Designed to hold Buckeye 21L, 31L, 42L and 46L Self-Feed Drills.



Tool Series	Tool Mount Assembly	Diameter "D"		Dimension "C"	
		in.	mm	in.	mm
21LD	1110494	1.625/1.627	41	0.718/0.720	18
31LD	1110507	1.875/1.877	48	0.843/0.845	21
42LD	1110507	1.875/1.877	48	0.843/0.845	21
46LD	1110508†	2.501/2.503	64	1.091/1.095	28

† Quotation required

## 1110496-(XX) Mounting Tube



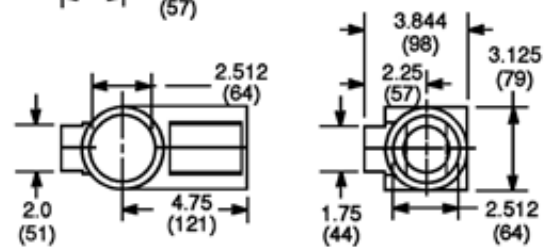
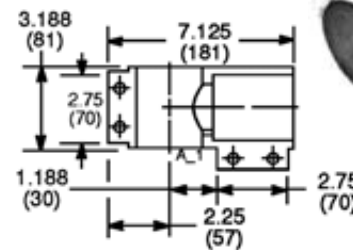
Tube Part No.	Length "L"*	
	in.	mm
1110496-06†	6	152
1110496-12	12	305
1110496-18†	18	457
1110496-24	24	610
1110496-30†	30	762

\* Longer tubes available upon request.

† Quotation required

## 1110495 Tee Mount

Forms a right angle from mounting tube to allow for proper positioning of the tool to the workpiece.



## 1110553 Coupling Assembly

Used in conjunction with mounting tubes to permit elongation of mounting assembly either horizontally or vertically.

