

Tube Nut Wrenches

Clecomatic Clutch

Cleco®

24 Series

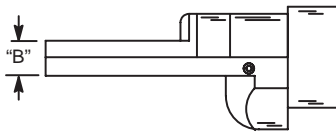
Torque Range:
14 - 40 Nm
19 - 54 Ft. Lbs

- One hand two position throttle
- External torque adjustment
- Self Aligning Socket

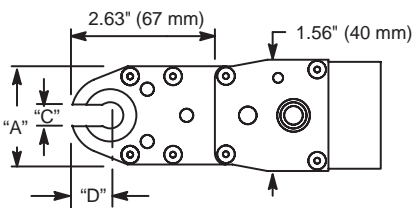


TERMINATION

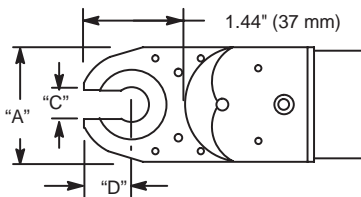
T2, T3 & T4 Head Height



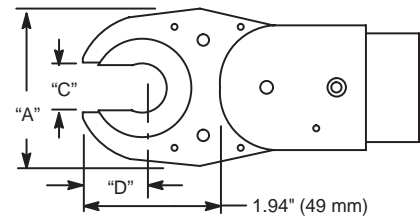
T2 Head



T3 Head



T4 Head



NOTE: Models listed are examples. Use chart on bottom of facing page for specific model required but not listed.

Model Number	Free Speed RPM	Torque Range		Weight		Length		Socket Size		"A"		"B"		"C"		"D"	
		Ft. Lbs. Min - Max	Nm Min - Max	lbs.	kg	in.	mm	in.	mm	in.	mm	in.	mm	in.	mm	in.	mm
24RTA20T2	240	10.4 - 14.7	14 - 20	4.3	2.0	16.8	426	7/16	—	1.42	36	0.55	14	0.28	7.0	0.53	13.5
24RTA30T3	175	14.7 - 22.1	20 - 30	4.5	2.0	16.7	426	9/16	—	1.65	42	0.59	15	0.51	13	0.73	18.5
24RTA40T4	130	19.2 - 29.5	26 - 40	5.1	2.3	17.7	449	7/8	—	2.36	60	0.59	15	0.71	18	0.93	23.5

Self Aligning

GENERAL:
Air Inlet: 1/4" NPT
Tool performance rated at 90 psi (620kPa) air pressure.

EXTRA EQUIPMENT:
Specify socket from page 59
OPTIONAL EQUIPMENT:
Torque signal kit: 201900 (see page 62)



Tube and hose applications, once only accessible by the use of hand tools, can now be tightened by the Cleco family of Tube Nut Wrenches at a speed that maximizes productivity.

Torque repeatability is assured by the proven Clecomatic clutch and low inertia motor. These models use a single lever for the tightening of the fastener and the return of the socket to the open position. The flexibility coupled with the proven capabilities greatly increases the productivity rate of the assembly line.



Make sure that the socket is set to the open position. If not, push the throttle lever down half way to release the socket back to the open position.

Slide the tool on the fastener and push the throttle lever down fully to run the fastener down.

To free the tool, slide the tool off the tightened fastener and operate the throttle lever halfway to release the socket back to the open position.

Tube Nut Sockets

Socket Number	Head	Socket	Ext	Output
KS2ED40	T2	7/16	1/2	Partial Thru
KS2EE00	T2	1/2	Flush	Partial Thru
KS2MB02	T2	8mm	Flush	Double Thru
KS2MD00	T2	10mm	Flush	Partial Thru
KS2MD02	T2	10mm	Flush	Double Thru
KS2MD21	T2	10mm	1/4	Thru
KS2MD23	T2	10mm	1/4	Partial Thru Double
KS2MD31	T2	10mm	3/8	Thru
KS2MD40	T2	10mm	1/2	Partial Thru
KS2MD41	T2	10mm	1/2	Thru
KS2MD43	T2	10mm	1/2	Partial Thru Double
KS2MD60	T2	10mm	3/4	Partial Thru
KS2ME00	T2	11mm	Flush	Partial Thru
KS2ME01	T2	11mm	Flush	Thru
KS2ME02	T2	11mm	Flush	Double Thru
KS2ME32	T2	11mm	3/8	Double Thru
KS2ME61	T2	11mm	3/4	Thru
KS2MF00	T2	12mm	Flush	Partial Thru
KS2MF01	T2	12mm	Flush	Thru
KS2MF02	T2	12mm	Flush	Double Thru
KS2MF03	T2	12mm	Flush	Partial Thru Double
KS2MG00	T2	13mm	Flush	Partial Thru
KS2MG01	T2	13mm	Flush	Thru
KS2MG03	T2	13mm	Flush	Partial Thru Double
KS2MG11	T2	13mm	1/8	Thru
KS2MG22	T2	13mm	1/4	Double Thru
KS2MG23	T2	13mm	1/4	Partial Thru Double
KS2MG53	T2	13mm	5/8	Partial Thru Double
KS2MG61	T2	13mm	3/4	Thru
KS3EC00	T3	3/8	Flush	Partial Thru
KS3EC12	T3	3/8	1/8	Double Thru
KS3ED00	T3	7/16	Flush	Partial Thru
KS3EE00	T3	1/2	Flush	Partial Thru
KS3EF00	T3	9/16	Flush	Partial Thru
KS3EF01	T3	9/16	Flush	Thru
KS3EF03	T3	9/16	Flush	Partial Thru Double
KS3EF41	T3	9/16	1/2	Thru
KS3EG00	T3	5/8	Flush	Partial Thru
KS3EG01	T3	5/8	Flush	Thru
KS3EG02	T3	5/8	Flush	Double Thru

Socket Number	Head	Socket	Ext	Output
KS3EG22	T3	5/8	1/4	Double Thru
KS3EI00	T3	3/4	Flush	Partial Thru
KS3EI02	T3	3/4	Flush	Double Thru
KS3MD00	T3	10mm	Flush	Partial Thru
KS3MD01	T3	10mm	Flush	Thru
KS3ME00	T3	11mm	Flush	Partial Thru
KS3ME40	T3	11mm	1/2	Partial Thru
KS3MF00	T3	12mm	Flush	Partial Thru
KS3MF40	T3	12mm	1/2	Partial Thru
KS3MG00	T3	13mm	Flush	Partial Thru
KS3MG01	T3	13mm	Flush	Thru
KS3MG02	T3	13mm	Flush	Double Thru
KS3MH00	T3	14mm	Flush	Partial Thru
KS3MI00	T3	15mm	Flush	Partial Thru
KS3MJ00	T3	16mm	Flush	Partial Thru
KS3MK00	T3	17mm	Flush	Partial Thru
KS3ML00	T3	18mm	Flush	Partial Thru
KS3MM00	T3	19mm	Flush	Partial Thru
KS3MM02	T3	19mm	Flush	Double Thru
KS4EG00	T4	5/8	Flush	Partial Thru
KS4EG10	T4	5/8	1/8	Partial Thru
KS4EI00	T4	3/4	Flush	Partial Thru
KS4EI10	T4	3/4	1/8	Partial Thru
KS4EK00	T4	7/8	Flush	Partial Thru
KS4EL01	T4	15/16	Flush	Thru
KS4MF00	T4	12mm	Flush	Partial Thru
KS4MH03	T4	14mm	Flush	Partial Thru Double
KS4MK01	T4	17mm	Flush	Thru
KS4ML00	T4	18mm	Flush	Partial Thru
KS4MM00	T4	19mm	Flush	Partial Thru
KS4MM02	T4	19mm	Flush	Double Thru
KS4MP00	T4	22mm	Flush	Partial Thru
KS4MP03	T4	22mm	Flush	Partial Thru Double
KS4MR00	T4	24mm	Flush	Partial Thru
KS4MR01	T4	24mm	Flush	Thru
KS4MU00	T4	27mm	Flush	Partial Thru
KS4MU01	T4	27mm	Flush	Thru
KS4MU03	T4	27mm	Flush	Partial Thru Double
KS4MU40	T4	27mm	1/2	Partial Thru