

Hook Mounted Hoists

GARDNER-DENVER®

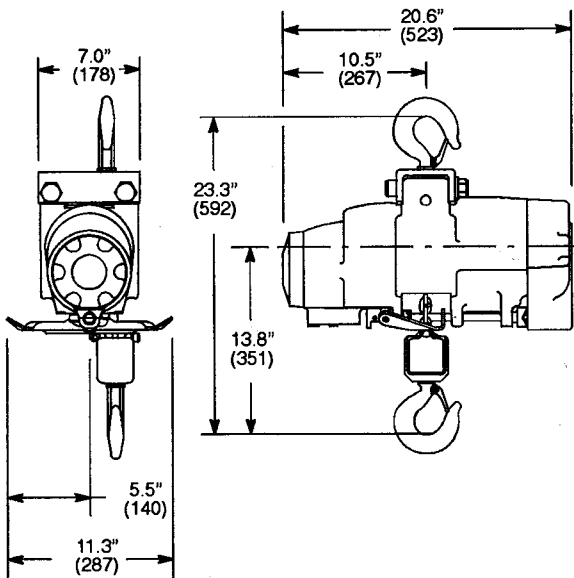
K1 Series

Capacity:
 2200-8800 lbs.
 1000-4000 kg

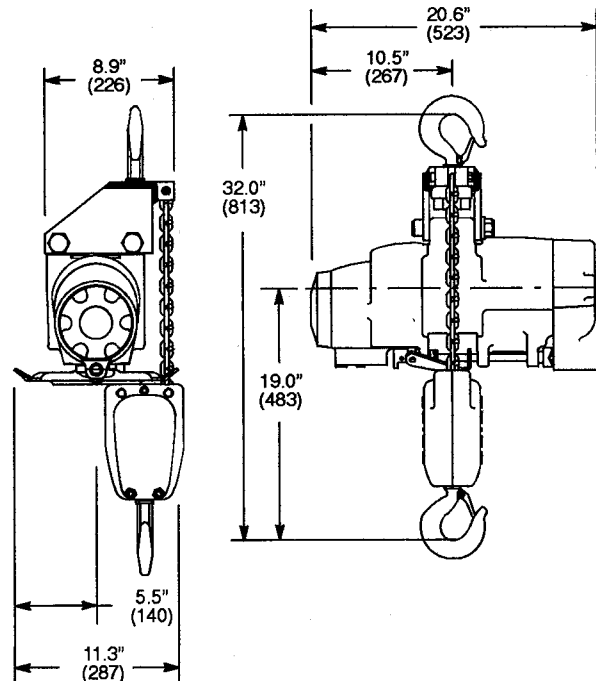
- Rotary Vane Air Motor
- Rope or Pendant Control
- Link Chain



Single Reeved
 2200 lbs. (1000 kg), 3300 lbs. (1500 kg) &
 4400 lbs. (2000 kg) Capacity



Double Reeved
 6600 lbs. (3000 kg) & 8800 lbs. (4000 kg) Capacity



Hook Mounted Hoists

K1 H A 22 L P E P --- A A A 22

SERIES

K1

TYPE MOUNT

H = Hook

FEATURES

A = Standard Unit
 H = Hi Temp Grease
 P = Epoxy Paint
 S = Epoxy Paint/Hi Temp Grease

CAPACITY

22 = 2200 lbs. 66 = 6600 lbs.
 33 = 3300 lbs. 88 = 8800 lbs.
 44 = 4400 lbs.

CHAIN TYPE

L = Link

CONTROL TYPE

P = Pendent (Standard-2LVR)
 R = Rope
 W = None-Pendent Ready
 X = None

CONTROL LENGTH

E = 5 FT T = 20 FT
 J = 10 FT Y = 25 FT
 O = 15 FT Z = None

CHAIN OPTIONS

L = Standard Link
 P = Zinc Plated Link
 X = No Chain

CAPACITY RATING

11 = 1100 lbs. (11/22/33/44)
 22 = 2200 lbs. (22/33/44)
 33 = 3300 lbs. (33/44)
 34 = 3300 lbs. (66)
 44 = 4400 lbs. (44)
 45 = 4400 lbs. (66/88)
 66 = 6600 lbs. (66)
 88 = 8800 lbs. (88)

VINTAGE

A

LOWER HOOK

A = Standard Link (22/33/44)
 B = Bullard Link (22/33/44)
 C = Standard Link (66/88)
 D = Bullard Link (66/88)
 X = No Hook

UPPER HOOK

A = Standard (22/33/44)
 B = Bullard (22/33/44)
 C = Standard (66/88)
 D = Bullard (66/88)
 X = No Hook

AMOUNT OF LIFT

--- Specify Length in Feet, 3 digits
 Example: 10' lift 010

Note: Numbers in parentheses following an option, represent the hoist capacities for which that option is available.

Model Number		Chain Type	Capacity		Lifting & Lowering Speeds				Reeves	Weight	
Pendent Control	Rope Control		lbs.	kg	Maximum Lift		Maximum Lower			lbs.	kg
						fpm	mpm	fpm	mpm		
K1HA22LPEP010AAA22	K1HA22LREP010AAA22	Link	2200	1000	33	10	52	16	1	107	49
K1HA33LPEP010AAA33	K1HA33LREP010AAA33	Link	3300	1500	21	6	34	10	1	107	49
K1HA44LPEP010AAA44	K1HA44LREP010AAA44	Link	4400	2000	15	5	24	7	1	107	49
K1HA66LPEP010CCA66	K1HA66LREP010CCA66	Link	6600	3000	10	3	17	5	2	130	59
K1HA88LPEP010CCA88	K1HA88LREP010CCA88	Link	8800	4000	7	2	12	4	2	130	59

GENERAL:

Air Inlet: 1/2" NPT (use 3/4" I.D. Hose)
 Performance rated at 90 psig (6 bar/620 kPa) air pressure.
 Air Consumption 75 cfm (2.12m³/min.) at rated load.

STANDARD EQUIPMENT:

Hook mounted air hoist with 10 ft. (3.0m) lift
 Rope Control: 5 ft. (1.5m) rope length
 Pendent Control: 5 ft. (1.5m) hose length

EXTRA EQUIPMENT:

Chain container – page 53
 Hoist trolleys – page 20
 Auxiliary cable (Backup suspension) – page 55
 Piped exhaust adapter (3/4"NPT) – 536567
 Tractor connection kit – 516710