

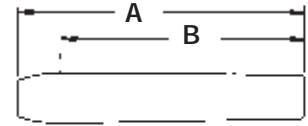
B-2000 Series Boiler Expanders

(Mandrels Sold Separately)

Airetool®

B-2000 Series

-x signifies tube sheet thickness



SHORT SERIES MANDRELS

X	Tube Sheet	"A" Dimension		"B" Dimension	
		In.	mm	In.	mm
-3	1/2" - 3/4" (12.7-19.05mm)	1-7/16"	36.5	1-1/16"	26.9
-5	7/8" - 1-1/4" (22.2-31.7mm)	1-15/16"	49.2	1-9/16"	39.6
-7	1-3/8" - 1-3/4" (34.9-44.4mm)	2-7/16"	61.9	2-1/16"	52.3
-9	1-7/8" - 2-1/4" (47.6-57.1mm)	2-15/16"	74.6	2-9/16"	65.0
-11	2-3/8" - 2-3/4" (60.3-69.8mm)	3-7/16"	87.3	3-1/16"	77.7

Expander Number	Tube Size				Expander						
	OD	Gauge	OD	Gauge	Exp. Range		St. Roll Set	Complete Roll Set	Mandrel (Length)	SO. Size	Short Mandrels
					In.	mm					
B-2079-x* ‡	1	13-14			0.787-0.921	20.0-23.4	079-x-RS	079-x-FS	83-M (13-27/32")	1/2	
B-2083-x* ‡	1	15-16			0.827-0.961	21.0-24.4	083-x-RS	083-x-FS	83-M (13-27/32")	1/2	
B-2087-x* ‡	1-1/4	7			0.866-1.004	22.0-25.5	087-x-RS	087-x-FS	91-M (13-27/32")	1/2	
B-2091-x* ‡	1-1/4	8-9			0.906-1.043	23.0-26.5	095-x-RS	095-x-FS	91-M (13-27/32")	1/2	
B-2095-x* ‡	1-1/4	10			0.945-1.105	24.0-28.1	095-x-RS	095-x-FS	99-M (14-3/8")	1/2	
B-2099-x* ‡	1-1/4	11-13			0.984-1.142	25.0-29.0	099-x-RS	099-x-FS	99-M (14-3/8")	1/2	
B-2103-x* ‡	1-1/4	14-15			1.024-1.181	26.0-30.0	103-x-RS	103-x-FS	99-M (14-3/8")	1/2	
B-2111-x ‡	1-1/4	16			1.105-1.299	28.1-33.0	111-x-RS	111-x-FS	118-M (15-27/32")	3/4	MS-1, 2, 3
B-2118-x ‡	1-1/2	10-12			1.221-1.378	31.0-35.0	118-x-RS	118-x-FS	118-M (15-27/32")	3/4	MS-1, 2, 3
B-2126-x ‡	1-1/2	13-16			1.300-1.496	33.0-38.0	126-x-RS	126-x-FS	126-M (16-31/64")	3/4	MS-2, 3, 4
B-2134-x	1-3/4	8-9	2	3	1.379-1.575	35.0-40.0	126-x-RS	126-x-FS	134-M (16-31/32")	3/4	MS-2, 3, 4
B-2142-x	1-3/4	10-12	2	4-5	1.457-1.673	37.0-42.5	142-x-RS	142-x-FS	150-M (17-3/32")	3/4	MS-3, 4, 5
B-2150-x	1-3/4	13-16	2	6	1.536-1.752	39.0-44.5	150-x-RS	150-x-FS	150-M (17-3/32")	3/4	MS-3, 4, 5, 6
B-2158-x	2	7-9	2-1/4	3	1.615-1.850	41.0-47.0	158-x-RS	158-x-FS	174-M (18-3/32")	3/4	MS-4, 5, 6, 7, 8
B-2166-x	2	10-12	2-1/4	4-5	1.693-1.929	43.0-49.0	166-x-RS	166-x-FS	174-M (18-3/32")	3/4	MS-4, 5, 6, 7, 8
B-2174-x	2	13-16	2-1/4	6	1.772-2.027	45.0-51.5	174-x-RS	174-x-FS	174-M (18-3/32")	3/4	MS-4, 5, 6, 7, 8
B-2181-x	2	16	2-1/2	3	1.851-2.126	47.0-54.0	181-x-RS	181-x-FS	197-M (20-15/32")	1	MS-7, 8, 9, 10, 11
B-2189-x	2-1/4	10-13	2-1/2	4-5	1.930-2.205	49.0-56.0	174-x-RS	174-x-FS	197-M (20-15/32")	1	MS-7, 8, 9, 10, 11
B-2197-x	2-1/4	14-16	2-1/2	6	2.009-2.362	51.0-60.0	205-x-RS	205-x-FS	197-M (20-15/32")	1	MS-6, 7, 8, 9, 10, 11
B-2205-x	2-1/2	7-10			2.087-2.441	53.0-62.0	205-x-RS	205-x-FS	221-M (20-21/32")	1	MS-7, 8, 9, 10, 11, 12
B-2213-x	2-1/2	11-13	3	2	2.116-2.520	55.0-64.0	213-x-RS	213-x-FS	221-M (20-21/32")	1	MS-7, 8, 9, 10, 11, 12
B-2221-x	2-1/2	14-16			2.245-2.598	57.0-66.0	221-x-RS	221-x-FS	221-M (20-21/32")	1	MS-7, 8, 9, 10, 11, 12
B-2229-x	2-3/4	7-9			2.323-2.677	59.0-68.0	221-x-RS	221-x-FS	244-M (20-1/2")	1	MS-8, 9, 10, 11, 12, 13
B-2237-x	2-3/4	10-12			2.402-2.756	61.0-70.0	237-x-RS	237-x-FS	244-M (20-1/2")	1	MS-8, 9, 10, 11, 12, 13
B-2244-x	2-3/4	13-16			2.481-2.835	63.0-72.0	252-x-RS	252-x-FS	244-M (20-1/2")	1	MS-8, 9, 10, 11, 12, 13
B-2252-x	3	7-8			2.560-2.913	65.0-74.0	252-x-RS	252-x-FS	268-M (20-1/64")	1	MS-10, 11, 12, 13, 14
B-2260-x	3	10-12			2.638-2.992	67.0-76.0	260-x-RS	260-x-FS	268-M (20-1/64")	1	MS-10, 11, 12, 13, 14
B-2268-x	3	13-14			2.717-3.071	69.0-78.0	268-x-RS	268-x-FS	268-M (20-1/64")	1	MS-10, 11, 12, 13, 14
B-2276-x	3	15-16			2.796-3.150	71.0-80.0	276-x-RS	276-x-FS	300-M (20-1/2")	1	MS-12, 13, 14, 15, 16
B-2284-x	3-1/4	7-11			2.874-3.228	73.0-82.0	284-x-RS	284-x-FS	300-M (20-1/2")	1	MS-12, 13, 14, 15, 16
B-2292-x	3-1/4	12-14			2.953-3.307	75.0-84.0	292-x-RS	292-x-FS	300-M (20-1/2")	1	MS-12, 13, 14, 15, 16
B-2300-x	3-1/4	15-16	3- 1/2	7-9	3.032-3.386	77.0-86.0	315-x-RS	315-x-FS	300-M (20-1/2")	1	MS-12, 13, 14, 15, 16
B-2308-x	3-1/2	10-12			3.111-3.465	79.0-88.0	284-x-RS	284-x-FS	347-M (22-15/32")	1	MS-15, 16, 17, 18, 19
B-2315-x	3-1/2	13-15			3.190-3.622	81.0-92.0	315-x-RS	315-x-FS	347-M (22-15/32")	1	MS-14, 15, 16, 17, 18, 19
B-2323-x	3-1/2	16	3-3/4	7-8	3.268-3.701	83.0-94.0	323-x-RS	323-x-FS	347-M (22-15/32")	1	MS-14, 15, 16, 17, 18, 19
B-2331-x	3-3/4	9-12			3.347-3.780	85.0-96.0	331-x-RS	331-x-FS	347-M (22-15/32")	1	MS-14, 15, 16, 17, 18, 19
B-2339-x	3-3/4	13-16			3.426-3.858	87.0-98.0	355-x-RS	355-x-FS	347-M (22-15/32")	1	MS-14, 15, 16, 17, 18, 19
B-2347-x	4	7-8			3.505-3.937	89.0-100.0	363-x-RS	363-x-FS	347-M (22-15/32")	1	MS-14, 15, 16, 17, 18, 19
B-2355-x	4	9-12			3.583-4.016	91.0-102.0	355-x-RS	355-x-FS	394-M (22-33/64")	1	MS-17, 18, 19, 20, 21
B-2363-x	4	13-15			3.662-4.094	93.0-104.0	363-x-RS	363-x-FS	394-M (22-33/64")	1	MS-17, 18, 19, 20, 21
B-2370-x	4	16	4-1/4	7-8	3.741-4.173	95.0-106.0	370-x-RS	370-x-FS	394-M (22-33/64")	1	MS-17, 18, 19, 20, 21
B-2378-x	4-1/4	9-11			3.820-4.252	97.0-108.0	378-x-RS	378-x-FS	394-M (22-33/64")	1	MS-17, 18, 19, 20, 21
B-2386x	4-1/4	12-16			3.898-4.331	99.0-110.0	386-x-RS	386-x-FS	394-M (22-33/64")	1	MS-17, 18, 19, 20, 21
B-2394-x	4-1/2	7-14			3.997-4.407	101.5-111.9	394-x-RS	394-x-FS	394-M (22-33/64")	1	MS-17, 18, 19, 20, 21

Some items are available on quotation basis only.

*B-2079-x to B-2103-x have mandrel retaining nut rather than metal roll retainer.
‡Indicates size 7, 9, & 11 roll lengths are not available.