

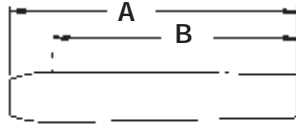
# B-3000 Series Boiler Expanders

(Mandrels Sold Separately)

# Airetool®

## B-3000 Series

Straight roll expander for non-flare boiler tubes; normally used in conjunction with Airetool B-1000 or B-2000 flare type expanders in thicker tube sheet applications.



X	Tube Sheet	"A" Dimension		"B" Dimension	
		In.	mm	In.	mm
-7	1/2" up tp 4-3/8"	2-7/16	61.9	2-1/16	52.3
-11	1-1/2" up to 5-3/8"	3-7/16	87.3	3-1/16	77.7

Expander Number	Tube Size				Expander					
	OD	Gauge	OD	Gauge	Exp. Range		St. Roll Set	Mandrel (Length)	Square Size (in.)	Short Mandrels
					In.	mm				
B-3111-7	1-1/4	16			1.105-1.299	28.1-33.0	111-x-RS	118-M (15-27/32")	3/4	MS-1, 2, 3
B-3118-7	1-1/2	10-12			1.221-1.378	31.0-35.0	118-x-RS	118-M (15-27/32")	3/4	MS-1, 2, 3
B-3126-7	1-1/2	13-16			1.300-1.496	33.0-38.0	126-x-RS	126-M (16-31/64")	3/4	MS-2, 3, 4
B-3134-x	1-3/4	8-9	2	3	1.379-1.575	35.0-40.0	126-x-RS	134-M (16-31/32")	3/4	MS-3, 4, 5
B-3142-x	1-3/4	10-12	2	4-5	1.457-1.673	37.0-42.5	142-x-RS	150-M (17-3/32")	3/4	MS-3, 4, 5, 6
B-3150-x	1-3/4	13-16	2	6	1.536-1.752	39.0-44.5	150-x-RS	150-M (17-3/32")	3/4	MS-3, 4, 5, 6
B-3158-x	2	7-9	2-1/4	3	1.615-1.850	41.0-47.0	158-x-RS	174-M (18-3/32")	3/4	MS-4, 5, 6, 7, 8
B-3166-x	2	10-12	2-1/4	4-5	1.693-1.929	43.0-49.0	166-x-RS	174-M (18-3/32")	3/4	MS-4, 5, 6, 7, 8
B-3174-x	2	13-16	2-1/4	6	1.772-2.027	45.0-51.5	174-x-RS	174-M (18-3/32")	3/4	MS-4, 5, 6, 7, 8
B-3181-x	2	16	2-1/2	3	1.851-2.126	47.0-54.0	181-x-RS	197-M (20-15/32")	1	MS-7, 8, 9, 10, 11
B-3189-x	2-1/4	10-13	2-1/2	4-5	1.930-2.205	49.0-56.0	174-x-RS	197-M (20-15/32")	1	MS-7, 8, 9, 10, 11
B-3197-x	2-1/4	14-16	2-1/2	6	2.009-2.362	51.0-60.0	205-x-RS	197-M (20-15/32")	1	MS-6, 7, 8, 9, 10, 11
B-3205-x	2-1/2	7-10	3	2	2.087-2.441	53.0-62.0	205-x-RS	221-M (20-21/32")	1	MS-7, 8, 9, 10, 11, 12
B-3213-x	2-1/2	11-13	3	2	2.116-2.520	55.0-64.0	213-x-RS	221-M (20-21/32")	1	MS-7, 8, 9, 10, 11, 12
B-3221-x	2-1/2	14-16	3	2	2.245-2.598	57.0-66.0	221-x-RS	221-M (20-21/32")	1	MS-7, 8, 9, 10, 11, 12
B-3229-x	2-3/4	7-9			2.323-2.677	59.0-68.0	221-x-RS	244-M (20-1/2")	1	MS-8, 9, 10, 11, 12, 13
B-3237-x	2-3/4	10-12			2.402-2.756	61.0-70.0	237-x-RS	244-M (20-1/2")	1	MS-8, 9, 10, 11, 12, 13
B-3244-x	2-3/4	13-16			2.481-2.835	63.0-72.0	252-x-RS	244-M (20-1/2")	1	MS-8, 9, 10, 11, 12, 13
B-3252-x	3	7-8			2.560-2.913	65.0-74.0	252-x-RS	268-M (20-1/64")	1	MS-10, 11, 12, 13, 14
B-3260-x	3	10-12			2.638-2.992	67.0-76.0	260-x-RS	268-M (20-1/64")	1	MS-10, 11, 12, 13, 14
B-3268-x	3	13-14	3-1/2	7-9	2.717-3.071	69.0-78.0	268-x-RS	268-M (20-1/64")	1	MS-10, 11, 12, 13, 14
B-3276-x	3	15-16	3-1/2	7-9	2.796-3.150	71.0-80.0	276-x-RS	300-M (20-1/2")	1	MS-12, 13, 14, 15, 16
B-3284-x	3-1/4	7-11	3-1/2	7-9	2.874-3.228	73.0-82.0	284-x-RS	300-M (20-1/2")	1	MS-12, 13, 14, 15, 16
B-3292-x	3-1/4	12-14	3-1/2	7-9	2.953-3.307	75.0-84.0	292-x-RS	300-M (20-1/2")	1	MS-12, 13, 14, 15, 16
B-3300-x	3-1/4	15-16	3-1/2	7-9	3.032-3.386	77.0-86.0	315-x-RS	300-M (20-1/2")	1	MS-12, 13, 14, 15, 16
B-3308-x	3-1/2	10-12	3-3/4	7-8	3.111-3.465	79.0-88.0	284-x-RS	347-M (22-15/32")	1	MS-14, 15, 16, 17, 18, 19
B-3315-x	3-1/2	13-15	3-3/4	7-8	3.190-3.622	81.0-92.0	315-x-RS	347-M (22-15/32")	1	MS-14, 15, 16, 17, 18, 19
B-3323-x	3-1/2	16	3-3/4	7-8	3.268-3.701	83.0-94.0	323-x-RS	347-M (22-15/32")	1	MS-14, 15, 16, 17, 18, 19
B-3331-x	3-3/4	9-12	3-3/4	7-8	3.347-3.780	85.0-96.0	331-x-RS	347-M (22-15/32")	1	MS-14, 15, 16, 17, 18, 19
B-3339-x	3-3/4	13-16	3-3/4	7-8	3.426-3.858	87.0-98.0	355-x-RS	347-M (22-15/32")	1	MS-14, 15, 16, 17, 18, 19
B-3347-x	4	7-8	3-3/4	7-8	3.505-3.937	89.0-100.0	363-x-RS	347-M (22-15/32")	1	MS-14, 15, 16, 17, 18, 19
B-3355-x	4	9-12	4-1/4	7-8	3.583-4.016	91.0-102.0	355-x-RS	394-M (22-33/64")	1	MS-17, 18, 19, 20, 21
B-3363-x	4	13-16	4-1/4	7-8	3.662-4.094	93.0-104.0	363-x-RS	394-M (22-33/64")	1	MS-17, 18, 19, 20, 21
B-3370-x	4	16	4-1/4	7-8	3.741-4.173	95.0-106.0	370-x-RS	394-M (22-33/64")	1	MS-17, 18, 19, 20, 21
B-3378-x	4-1/4	9-11	4-1/4	7-8	3.820-4.252	97.0-108.0	378-x-RS	394-M (22-33/64")	1	MS-17, 18, 19, 20, 21
B-3386-x	4-1/4	12-16	4-1/4	7-8	3.898-4.331	99.0-110.0	386-x-RS	394-M (22-33/64")	1	MS-17, 18, 19, 20, 21
B-3394-x	4-1/2	7-14	4-1/4	7-8	3.997-4.407	101.5-111.0	394-x-RS	394-M (22-33/64")	1	MS-17, 18, 19, 20, 21

Some items are available on quotation basis only.