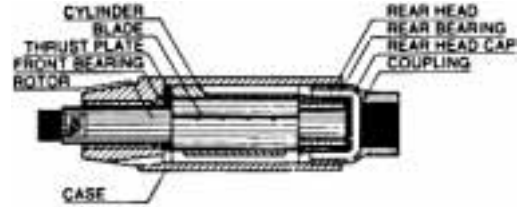


Airetool 3000 Series Motors



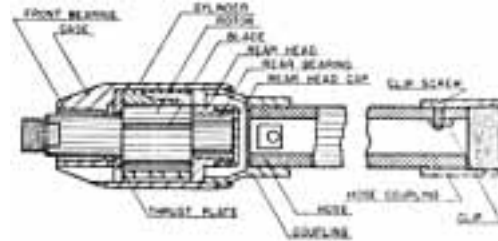
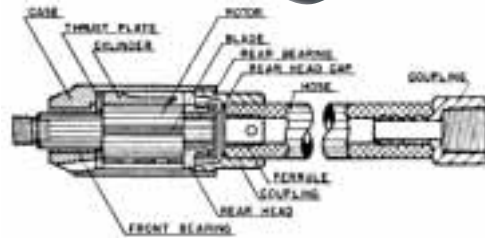
All Motors include Shaft Wrench

Motor No.	Motor OD	Tube ID	Case & Frt. Brg	Cylinder	R. Cap & Brg.	Machine Coupling	Pipe Tap	Rotor	Blades Per Set	Thrust Plate	Front Bearing	Rear Bearing	Rear Head Cap	Front Dowel	Rear Dowel	Shaft Wrench	Rotor Thread	Hose
3150 Wt 2.4	1-3/8	1-1/2	31501 0.8#	31502 .25#	31503 .12#	31504 .25#	1/2	31505 .43#	1806 (4) .12#	1707 .03#	X 1708 .05#	31509 .02#		31511 .01#	31512 .01#	9/16 .1#	9/16 N.C.	1/2
3162 Wt 2.7	1-1/2	1-5/8	61621 0.9#	31622 .3#	31623 .15#	31624 .3#	3/4	31625 0.6#	1806 (4) .12#	1807 .04#	X 1808 .06#	31629 .03#		31511 .1#	31512 .1#	5/8 .1#	5/8 N.C.	1/2
3175 Wt 2.9	1-5/8	1-3/4	31751 1.1#	31622 .3#	31623 .15#	31624 .3#	3/4	31625 0.6#	1806 (4) .12#	1807 .04#	X 1808 .06#	31629 .03#		31511 .1#	31512 .1#	5/8 .1#	5/8 N.C.	1/2
3187 Wt 4	1-3/4	1-7/8	31871 1.5#	31872 .43#	31873 .18#	31874 .25#	3/4	31875 1.0#	2306 (4) .18#	22307 C .06#	2208 .12#	32129 .03#		31811 .01#	31812 .01#	5/8 .1#	5/8 N.C.	3/4
3200 Wt 4.6	1-7/8	2	32001 1.6#	32002 .6#	32003 .3#	32004 .5#	3/4	32005 1.2#	2306 (4) .18#	2307 .06#	2208 .12#	32009 .06#	3213 .06#	32011 .01#	32112 .01#	5/8 .1#	5/8 N.C.	3/4
3212 Wt 4.9	2	2-1/8	32121 1.8#	32122 .8#	32123 .3#	32124 .5#	3/4	32125 1.2#	21606 (4) .18#	21607 .06#	2208 .12#	32129 .06#	4413 .05#	32011 .01#	32112 .01#	5/8 .1#	5/8 N.C.	3/4
3225 Wt 6	2-1/8	2-1/4	32251 2#	32252 .8#	32253 .5#	32254 .6#	3/4	32255 1.5#	21506 (5) .25#	1507 .06#	1408 .25#	32009 .06#	3213 .06#	32011 .01#	32012 .01#	3/4 .2#	3/4 N.C.	3/4
3250 Wt 7.3	2-5/16	2-1/2	32501 2.5#	32502 1#	32503 .5#	32504 .6#	1	32505 2.2#	21406 (5) .3#	21407 .1#	21408 .3#	32009 .06#	3213 .06#	32511 .01#	32512 .01#	7/8 .3#	7/8 N.C.	1
3262 Wt 9.6	2-1/2	2-5/8	32621 3.4#	32622 1.06#	32623 .8#	32624 .8#	1	32755 2.7#	21306 (5) .4#	21907 .2#	1008 .4#	32759 .1#	213 .06#	32611 .01#	32612 .01#	7/8 .3#	7/8 N.C.	1
3275 Wt 10.6	2-5/8	2-3/4	32751 4#	32752 1.3#	32753 .8#	32754 .8#	1	32755 2.7#	21306 (5) .4#	21307 .2#	1008 .4#	32759 .1#	213 .06#	32611 .01#	32612 .01#	7/8 .3#	7/8 N.C.	1
3300 Wt 13	2-13/16	3	33001 4.5#	33002 1.5#	33003 1.1#	33004 1.2#	1	33005 3.5#	21006 (5) .5#	21007 .2#	1108 .5#	33009 .2#	713 .2#	32611 .01#	32612 .01#	1 .4#	1 N.F.	1
3318 Wt 14.5	3	3-3/16	33181 5.3#	33252 1.6#	33253 1.4#	33254 1.3#	1	33255 3.7#	20706 (5) .5#	20907 .25#	1108 .5#	33009 .2#	713 .2#	33211 .01#	33212 .01#	1 .4#	1 N.F.	1
3350 Wt 17.5	3-5/16	3-5/8	33501 6.1#	33502 2.3#	33503 1.5#	33504 1.5#	1	33505 4.6#	20706 (5) .5#	20707 .3#	20708 .6#	33009 .2#	713 .2#	33211 .01#	33212 .01#	1-1/8 .6#	1-1/8 N.F.	1
3400 Wt 22	3-3/4	4	34001 8.4#	34002 2.8#	34003 2#	34004 2#	1	34005 5.7#	20706 (5) .5#	34007 .3#	20708 .6#	33009 .2#	713 .2#	33211 .01#	33212 .01#	1-1/8 .6#	1-1/8 N.F.	1
3500 Wt 39.2	4-3/4	5	35001 15.9#	35502 3.7#	35503 2.8#	35504 3.5#	1-1/4	35505 9.6#	21206 (5) .8#	35507 .7#	21208 1.4#	33009 .2#	713 .2#	33211 .01#	33212 .01#	1-3/8 2#	1-3/8 N.F.	1

Some items are available on a quotation basis only.

Motors for tube/pipe sizes larger than 5"ID are supplied with ribs or rib cage to center the motor in tube or pipe being cleaned.

Airetool 4000 Series Motors

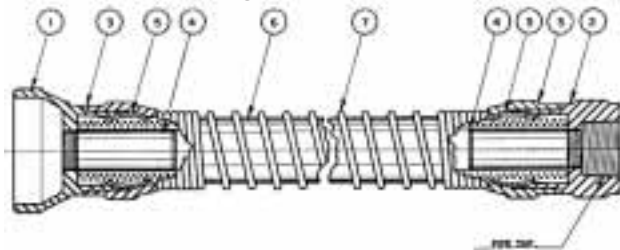


Motor No. / Weight	Motor OD	Tube ID & Radius	Case & Frt. Brg	Cylinder	R. Cap & Brg.	Machine Coupling	Rotor	Blades Per Set	Thrust Plate	Front Bearing	Rear Bearing	Rear Head Cap	Front Dowel	Rear Dowel	Tail Hose & Parts	Tail Hose Assy	Shaft Wrench	Rotor Thread	Hose
4250 Wt. 3.1#	1-7/8	2-1/4 X 15R 2-5/16 X 12R 2-1/2 X 15R	42501 .8#	42502 .2#	42503 .2#	42504 .2#	42505 .5#	4406 (4) .06#	2307 .03#	4408 .06#	42509 .03#	4413 .05#	32011 .01#	42512 .01#	Line A Below	42519 .8#	5/8 .1#	5/8 N.C.	1/2
4300 Wt. 4.7#	2-1/4	2-5/8 X 24R 2-3/4 X 12R	43001 1#	43002 .3#	43003 .5#	43004 .3#	43005 .8#	3306 (5) .06#	3307 .06#	3308 .1#	32009 .06#	3213 .06#	43011 .01#	43012 .01#	Line B Below	43019 1.6#	3/4 .2#	3/4 N.C.	3/4
4325 Wt. 5.6#	2-1/2	2-7/8 X 28R 3 X 16R	43251 1.6#	43252 .3#	43253 .5#	43254 .3#	43255 1.1#	3206 (5) .06#	3207 .06#	3308 .1#	32009 .06#	3213 .06#	43211 .01#	43212 .01#	Line B Below	43219 1.6#	3/4 .2#	3/4 N.C.	3/4
4350 Wt. 7.9#	2-3/4	3-1/4 X 16R 3-1/2 X 20R	43501 2.3#	43502 .6#	43503 .8#	43504 .7#	43505 1.6#	3706 (5) .1#	3307 .06#	3708 .2#	32759 .06#	213 .06#	32311 .01#	43512 .01#	Line B Below	43519 2#	7/8 .3#	7/8 N.C.	1
4450 Wt. 11.3#	3-1/8	4 X 15R	44501 3.6#	44502 1#	44503 1.4#	44504 1#	44505 2.1#	4705 (5) .2#	507 .3#	4708 .3#	33009 .2#	713 .2#	33211 .01#	44512 .01#	Line B Below	44519 23.3#	7/8 .3#	7/8 N.C.	1
4481 Wt. 19.3#	3-3/4	4-13/16 X 18R	44811 7.4#	44812 2.2#	34003 2#	34004 2#	44815 5#	5006 (5) .3#	34007 .3#	5008 .4#	33009 .2#	713 .2#	33211 .01#	44512 .01#	Not Req'd	Not Req'd	1-1/8 .6#	1.125 N.F.	1
4600 Wt. 24.6#	5	5-3/4 X 72R 6 X 26R	46001 12.7#	44812 2.2#	34003 2#	34004 2#	44815 5#	5006 (5) .3#	34007 .3#	5008 .4#	33009 .2#	713 .2#	33211 .01#	44512 .01#	Not Req'd	Not Req'd	1-1/8 .6#	1.125 N.F.	1

Motors are supplied with ribs or rib cage for tube/pipe sizes larger than 6" ID.

	Tap Size	Tail Hose	Hose Cpl.	Clip	Screw	Ferrule
Line A	1/2"	4115	4116			4418
Weight		.3#	.3#			0.01
Line B	1"	3315	3316	3317	3318	
Weight		.8#	.5#	.03#	.01#	

Accessory Heavy Duty Screw Type Tail Hose Assemblies with Wire Inserted Hose and Spring Protector for 4000 Series Motors



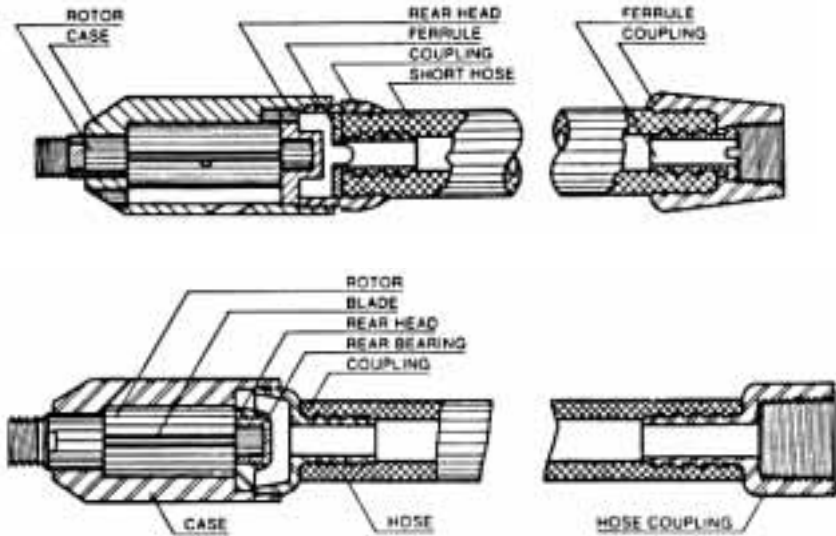
Motor Assy	Hose Cpl.	Machine Coupling	Hose Cpl. Cpl.	Hose Pipe Tap	Compression Nut	Compression Ferrule	Comp Sleeve	Hose & Spr Protector
Detail #	1	2	3	4	5	6		
Required	1	1	2	2	2	2		1
4250	425019	42504 B	425016	1/2"	42504 C	42504 D	42504 E	425015
4300	430019	43004 B	432516	3/4"	43254 C	43254 D	43254 E	432515 K
4325	432519	43254 B	432516	3/4"	43254 C	43254 D	43254 E	432515 K
4350	435019	43504 B	435016	1"	43504 C	43254 D	43254 E	432515 K
4450	445019	44504 B	435016	1"	43504 C	43254 D	43254 E	432515 K

Some items are available on a quotation basis only.

Airetool 60 Series and 4000 Series Midget Motors



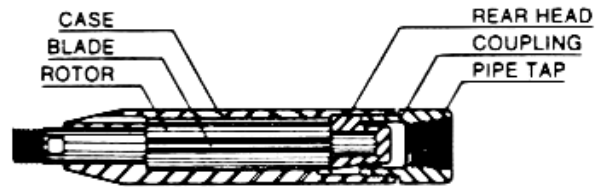
Motor No.	Motor OD	Tube ID & Radius	Case	R. Head & Bearing	Machine Cpl.	Rotor	Blade Set of 4	Rear Brg.	Rear Dowel	Tail Hose	Tail Hose Cpl	Pipe Tap	Tail Hose Assy	Front Ferrule	Rear Ferrule	Shaft Wrench	Rotor Thd	Hose Size
X 64 .26#	11/16	13/16" 5"	X 6401 .07#	X 6403 .01#	X 6404 .03#	X 6405 .05#	X 6406 .01#		X 6412 (2) .01#	X 6415 .02#	X 6416 .04#	1/4"	X 6419 .1#	X 6417 .01#	X 6418 .01#	3/16" .02#	1/4" N.F.	1/4"
X 61 .49#	7/8	1-1/32" 5"	X 6101 .12#	X 6103 .03#	X 6104 .05#	X 6105 .1#	X 6106 .02#		X 6112 (2) .01#	X 6115 .02#	X 6117 .08#	1/4"	X 6119 .17#	X 6117 .02#	X 6118 .01#	1/4" .04#	5/16" N.F.	1/4"
X 63 .63#	1-1/16	1-1/4" 6"	X 6301 .14#	X 6303 .04#	X 6304 .07#	X 6305 .12#	X 6306 .02#		X 6312C (2) .01#	X 6315 .07#	X 6316 .19#	3/8"	X 6319 .38#	X 6317 .03#	X 6318 .02#	5/16" .08#	3/8" N.F.	3/8"
X 65 .95#	1-3/16	1-1/2" 6"	X 6501 .22#	X 6503 .05#	X 6504 .09#	X 6505 .17#	X 6506 .03#		X 6312C (2) .01#	X 6315 .07#	X 6316 .19#	3/8"	X 6519 .4#	X 6517 .03#	X 6518 .02#	5/16" .08#	3/8" N.F.	3/8"
X 66 1.04#	1-5/16	1-3/4" 6"	X 6601 .28#	X 6603 .05#	X 6604 .11#	X 6605 .22#	X 6606 .03#		X 6312C (2) .01#	X 6315 .07#	X 6316 .19#	3/8"	X 6619 .42#	X 6617 .03#	X 6318 .03#	3/8" .08#	3/8" N.F.	3/8"
4200 2#	1-1/2	1-5/8" 24" 1-3/4" 15"	42001 .6#	42003 .06#	42004 .1#	42005 .3#	4106 .03#	42009 .01#	42012 .01#	4115 .2#	4116 .3#	1/2"	42019 .6#			5/8" .1#	5/8" N.C.	1/2"
4225 2.1#	1-3/4	2" 15"	42251	42003 .06#	42004 .1#	42005 .3#	4106 .03#	42009 .01#	42012 .01#	4115 .2#	4116 .3#	1/2"	42019 .6#			5/8" .1#	5/8" N.C.	1/2"



Some items are available on a quotation basis only.

Airetool Midget Motors

Straight Tubes 1/2" - 1-3/8"

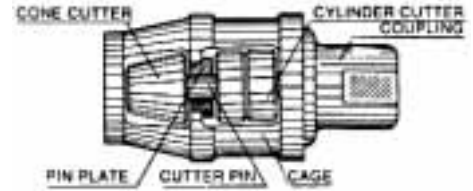


Motor No.	Motor OD	Tube ID	Case	Rear Head	Machine Cpl.	Pipe Tap	Rotor	Blade Set of 4	Dowel Pin	Shaft Wrench	Rotor Thread	Hose
24 .12#	15/32"	1/2"	X 2401 .04#	2403 .01#	2404 .01#	18-20	2405 .02#	2406 .01#	2412 .01#	5/32" .02#	10-32	3/16"
30 .15#	37/64"	5/8"	X 3001 .05#	X 3003 .01#	X 3004 .01#	1/8"	2705 .03#	2706 .01#	3012 .01#	3/16" .02#	1/4" N.F.	1/4"
27 .2#	11/16"	3/4"	X 2701 .08#	2703 .08#	2704 .02#	1/8"	2705 .03#	2706 .01#	3012 .01#	3/16" .02#	1/4" N.F.	1/4"
29 .5#	25/32"	7/8"	2901 .18#	2903 .03#	2904 .06#	1/4"	2605 .12#	2606 .02#	2912 .01#	5/16" .08#	3/8" N.F.	3/8"
26 .64#	29/32"	1"	2601 G .3#	2603 .03#	2604 .08#	3/8"	2605 .12#	2606 .02#	X 6312 .01#	5/16" .08#	3/8" N.F.	3/8"
31 .65#	1-1/32"	1-1/8"	3101 .28#	3103 .04#	3104 .1#	3/8"	3105 .12#	3106 .01#	3111 .01#	5/16" .08#	3/8" N.F.	3/8"
X 63 A .5#	1-1/16"	1-1/4"	X 6301 .14#	X 6303 .04#	X 6304 A .09#	3/8"	X 6305 .12#	X 6306 .02#	X 6312 (2) .01# ea.	5/16" .08#	3/8" N.F.	3/8"
X 65 A .67#	1-3/16"	1-3/8"	X 6501 .22#	X 6503 .05#	X 6504 .12#	3/8"	X 6505 .17#	X 6506 .03#	X 6312 (2) .01# ea.	5/16" .08#	3/8" N.F.	3/8"

All Motors are furnished with a Shaft Wrench

Some items are available on a quotation basis only.

Airetool Single Expansion "P" and "TC" Type 3 Heads



When ordering state the motor number and the motor's shaft thread size.

Head Number	Tube ID	Closed	Expand To	Cage	Pin Plate	Head Coupling	Tap Coupling	Cutter Pin	Cone Cutter	Cylinder Cutter
TC 14 87#	1-1/2"	1-3/8"	1-23/32"	1781 .5#		1783 .12#	9/16" N.C.	1584 (1) 1884 (1)	1787 (1) .06# ea.	1788 (2) .04# ea.
TC 11 1.2#	1-3/4"	1-5/8"	2"	1881 .68#		1883 .12#	5/8" N.C.	1584 (1) 1884 (1)	1587 (1) .08# ea.	1588 (2) .05# ea.
TC 17 PY 1.37#	1-7/8"	1-11/16"	2"	2281 TC 17 PY #62		2383 .18#	5/8" N.C.	1584 PY (3) .04# ea.	2287 (3) .05# ea.	2288 (6) .03# ea.
TC 16 PY 1.47#	2"	1-13/16"	2-3/16"	2381 PY .7#		2383 .18#	5/8" U.N.C.	1584 PY (3) .04# ea.	1787 (3) .06# ea.	1788 (6) .04# ea.
TC 13 PY 1.65#	2-1/8"	1-5/16"	2-5/16"	2381 A PY .93#		2383 .18#	5/8" U.N.C.	1584 PY (3) .04# ea.	1787 (3) .06# ea.	1788 (6) .04# ea.
P 15 PY 2.3#	2-1/4"	2-1/16"	2-7/16"	P 1591 PY 1.3#	P 1592 .18#	183 .37#	3/4" U.N.C.	2484 PY (3) .05# ea.	2487 (3) .08# ea.	3338 (9) .03# ea.
P 9 S 2.43#	2-3/8"	2-3/16"	2-11/16"	P 991 S 1#	P 992 S .12#	183 .37#	3/4" N.C.	2484 (3) .05# ea.	C 52 (3) .08# ea.	C 76 (6) .06# ea.
P 9 PY 2.6#	2-1/2"	2-1/4"	2-13/16"	P 991 PY 1.3	P 992 .18#	183 .37#	3/4" N.C.	1584 PY (3) .04# ea.	1587 (3) .08# ea.	1588 (6) .05# ea.
P 8 2.8#	2-5/8"	2-9/16"	2-7/8"	P 891 1.2#	P 892 .19#	21483 .37#	7/8" N.C.	184 (3) .08# ea.	1087 (3) .12# ea.	1088 (6) .082# ea.
P 7 3.2#	2-3/4"	2-9/16"	2-15/16"	P 791 1.5#	P 792 .25#	983 S .8#	7/8" N.C.	184 (3) .08# ea.	1087 (3) .12# ea.	1088 (6) .082# ea.
P 6 A PY 3.5#	3"	2-11/16"	3-1/8"	P 691 AY 2#	P 692 A .3#	983 S .8#	7/8" N.C.	184 (3) .08# ea.	1087 (3) .12# ea.	1088 (6) .082# ea.
P 6 3.6#	3-1/8"	2-13/16"	3-1/4"	P 691 AY 2.1#	P 692 .3#	983 S .8#	7/8" N.C.	184 (3) .08# ea.	1087 (3) .12# ea.	1088 (6) .082# ea.
P 5 4.8#	3-1/4"	3-1/16"	3-9/16"	P 591 2.3#	P 592 .37#	983 S .8#	7/8" N.C.	184 (3) .08# ea.	987 (3) .18# ea.	988 (6) .1# ea.
P 4 5.6#	3-1/2"	3-3/16"	3-13/16"	P 491 2.8#	P 492 .5#	883 F .9#	7/8" N.C.	884 (3) .12# ea.	787 (3) .2# ea.	788 (6) .13# ea.
P 3 6.3#	3-3/4"	3-9/16"	4-3/16"	P 391 3.3#	P 392 .6#	883 F .9#	7/8" N.C.	884 (3) .12# ea.	887 (3) .25# ea.	888 (6) .16# ea.
P 2 6.8#	4"	3-3/4"	4-1/2"	P 291 3.4#	P 292 .6#	883 F .9#	7/8" N.C.	884 (3) .12# ea.	887 (3) .25# ea.	888 (6) .16# ea.
P 1 8.6#	4-1/4"	3-13/16"	4-3/4"	P 191 4.3#	P 192 .6#	883 F .9#	1 1/8" N.F.	884 P (3) .13# ea.	887 (3) .25# ea.	888 (6) .16# ea.
P 0 9#	4-1/2"	4-1/8"	4-15/16"	P 091 5#	P 092 .68#	883 F .9#	1 1/8" N.F.	884 P (3) .13# ea.	887 B (3) .25# ea.	888 B (6) .16# ea.
P 10 9.8#	4-3/4"	4-3/8"	4-15/16"	P 1091 5.7#	P 1092 .7#	883 F .9#	1 1/8" N.F.	884 P (3) .13# ea.	887 (3) .25# ea.	888 (6) .16# ea.
TC 19 H S 13.8#	5"	4-1/2"	5-9/16"	1991 H S 7.7#		21283 2.2#	1 3/8" N.F.	884 P (3) .13#	1287 (3) .44# ea.	1288 (9) .25# ea.
TC 19 S 16.5	5-1/4"	4-7/8"	5-15/16"	1991 S 8.5#		8293 2.7#	1 3/8" N.F.	884 P (4) .13#	1287 (4) .44# ea.	1288 (12) .25# ea.
TC 20 S 18	6"	5-1/2"	6-1/2"	2091 S 10#		8293 2.7#	1 3/8" N.F.	884 P (4) .13#	1287 (4) .44# ea.	1288 (12) .25# ea.
TC 21 S 20#	6-1/4"	5-3/4"	6-3/4"	2191 S 11#		8293 2.7#	1 3/8" N.F.	884 P (4) .13#	11887 (4) .5# ea.	11888 (12) .3# ea.
TC 22 S 22#	6-1/2"	6"	7-1/16"	2291 S 12#		8293 2.7#	1 3/8" N.F.	884 P (4) .13#	11887 (4) .5# ea.	11888 (12) .3# ea.
TC 23 S 24#	6-3/4"	6-1/4"	7-5/16"	2391 S 13.5#		8293 2.7#	1 3/8" N.F.	2484 S (4) .3#	8287 (4) .5# EA.	8288 (12) .3# EA.
TC 24 S 26#	7"	6-1/2"	7-9/16"	2491 S 15.5#		8293 2.7#	1 3/8" N.F.	2484 S (4) .3#	8287 (4) .5# EA.	8288 (12) .3# EA.

Some items are available on a quotation basis only.

Airetool Forward Swing Heads Type 4

1-3/4" - 4-3/4" ID for Straight and Bent Tubes

Recommended spare parts:

Cone Cutters, Cutter Pins Arms, and Arm Pins.

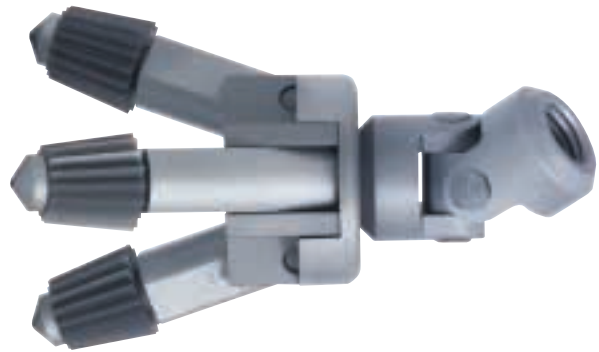
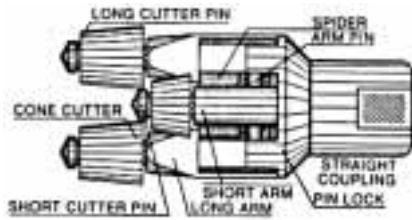


Figure 1 Shown with head coupling for straight tubes.

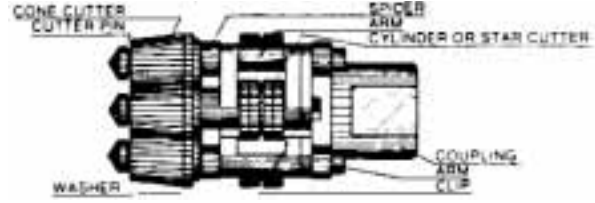
Figure 2 Shown with universal coupling for bent tubes.

Head Number	Tube ID	Closed	Expand To	Spider	Figure	Long Arm	Short Arm	Head Cpl.	Cpl. Tap	Long Cutter Pin	Short Cutter Pin	Arm Pin	Pin Lock	Cone Cutter	Star Cutter	No. Of Arms
1840	1-3/4	1-1/2	2-1/8	1841	1	1842 (1)	1842 A (1)		5/8 N.C.	1834 (1)	1834 A (1)	1845 (2)	1846	337 (2)	338 (3)	2
Wt .64#				.2#		.06#	.05#			.04#	.03#	.01# ea.	.1#	.06# ea.	.01# ea.	
1840 B	2-1/4	1-1/2	2-1/8	1841	2	1842 (1)	1842 A (1)	4151	5/8 N.C.	1834 (1)	1834 A (1)	1845 (2)	1846	337 (2)	338 (3)	2
Wt .7#				.2#		.06#	.05#	.4#		.04#	.03#	.01# ea.	.1#	.06# ea.	.01# ea.	
2340	2	1-7/8	3	2341	1	1832 (1)	1832 A (1)		5/8 N.C.	1834 (1)	1834 A (1)	2345 (2)	2346	337 (2)	338 (3)	2
Wt .83#				.3#		.08#	.07#			.04#	.03#	.01# ea.	.15#	.06# ea.	.01# ea.	
4440	2	1-7/8	3	2341	2	1832 (1)	1832 A (1)	4151	5/8 N.C.	1834 (1)	1834 A (1)	2345 (2)	2346	337 (2)	338 (3)	2
Wt .93				.3#		.08#	.07#	.4#		.04#	.03#	.01# ea.	.15#	.06# ea.	.01# ea.	
4470	2-5/16	2	3-7/8	4471	2	4472 (3)		4151	5/8 N.C.	4474 (3)		4475 (3)	4476	C 19 (3)		3
Wt 1.63				.3#		.1# ea.		.4#		.07#		.01# ea.	.12#	.04# ea.		
4470 A	2-5/16	2	3-7/8	4471	1	4472 (3)		2383 B	3/4 N.C.	4474 (3)		4475 (3)	4476	C 19 (3)		3
Wt 1.3#				.3#		.1# ea.		.16#		.07#		.01# ea.	.12#	.04# ea.		
3370	2-1/4	2-1/4	3-5/8	3371	2	3372 (3)		3551	3/4 N.C.	3374 (3)		3375 (3)	3376	637 (3)		3
Wt 3.3#				.6#		.2# ea.		.8#		.01# ea.		.01 ea.	.4#	.1# ea.		
3370 A	2-3/4	2-1/4	3-5/8	3371	1	3372 (3)		2043	7/8 N.C.	3374 (3)		3375 (3)	3376	637 (3)		3
Wt 2.9#				.6#		.2# ea.		.4#		.01# ea.		.01 ea.	.4#	.1# ea.		
3270	3	2-1/2	4	3271	2	3472 (2)	3272 (2)	3551	7/8 N.C.	3474 (2)	3274 (2)	3275 (2)	3276	1047 (2)	2837 (2)	4
Wt 3.3#				.6#		.09# ea.	.09# ea.	.8#		.09 ea.	.09# ea.	.01# ea.	.3#	.06# ea.	.1# ea.	
3270 A	3	2-1/2	4	3271	1	3472 (2)	3272 (2)	2043	7/8 N.C.	3474 (2)	3274 (2)	3275 (2)	3276	1047 (2)	2837 (2)	4
Wt 2.9#				.6#		.09# ea.	.09# ea.	.4#	3/4 N.C.	.09 ea.	.09# ea.	.01# ea.	.3#	.06# ea.	.1# ea.	
970	3-1/4	2-3/4	4-7/8	971	1	972 (2)	972 A (2)	543	7/8 N.C.	974 (2)	974 A (2)	975 (4)	976 (4)	637 (4)		4
Wt 3.3#				.8#		.09# ea.	.06# ea.	.8#	1 N.C.	.2# ea.	.12# ea.	.02# ea.	.25# ea.	.1# ea.		
970 B	3-1/4	2-3/4	4-7/8	971	2	972 (2)	972 A (2)	551	7/8 N.C.	974 (2)	974 A (2)	975 (4)	976 (4)	637 (4)		4
Wt 4#				.8#		.09# ea.	.06# ea.	1.5#		.2# ea.	.12# ea.	.02# ea.	.25# ea.	.1# ea.		
770	3-1/2	3	4-3/4	771	1	772 (2)	772 A (2)	873 A	7/8 N.C.	774 (2)	774 A (2)	775 (4)	776	747 (4)		4
Wt 4.5#				1.1#		.34# ea.	.12# ea.	.8#		.2# ea.	.12# ea.	.03# ea.	.25#	.18# ea.		
770 B	3-1/2	3	4-3/4	771	2	772 (2)	772 A (2)	1151	7/8 N.C.	774 (2)	774 A (2)	775 (4)	776	747 (4)		4
Wt 5.7#				1.1#		.34# ea.	.12# ea.	2#		.2# ea.	.12# ea.	.03# ea.	.25#	.18# ea.		
870	3-1/4 - 4	3-3/8	5-1/8	871	1	772 (2)	772 A (2)	873 A	7/8 N.C.	774 (2)	774 A (2)	875 (4)	876	747 (4)		4
Wt 5#				1.6#		.34# ea.	.12# ea.	.8#		.2# ea.	.12# ea.	.03# ea.	.25#	.18# ea.		
870 B	3-1/4 - 4	3-3/8	5-1/8	871	2	772 (2)	772 A (2)	1151	7/8 N.C.	774 (2)	774 A (2)	875 (4)	876	747 (4)		4
Wt 6.2#				1.6#		.34# ea.	.12# ea.	2#		.2# ea.	.12# ea.	.03# ea.	.25#	.18# ea.		
770 S A	4-3/4	2-3/4	5-1/2	771 S	1	772 S (4)		543	7/8 N.C.	774 S (4)		775 (4)	776 S (4)	747 (4)		4
Wt 5.1#				1.1#		.37# ea.		.8#		.34# ea.		.03# ea.	.25# ea.	.18# ea.		
770 S	4-3/4	2-1/4	5-1/2	771 S	2	772 S (4)		551	7/8 N.C.	774 S (4)		775 (4)	776 S (4)	747 (4)		4
Wt 5.8#				1.1#		.37# ea.		1.5#		.34# ea.		.03# ea.	.25# ea.	.18# ea.		

Some items are available on a quotation basis only.

Airetool "Self Feed" Clip Type Wing Arm Heads Type 5

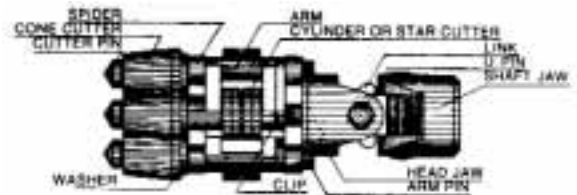
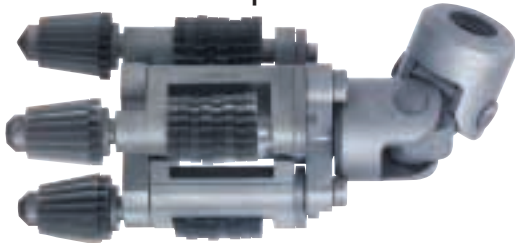
For Straight tubes and Pipe 1-3/4" – 8-3/4" I.D.



When ordering state the motor number and the motor's shaft thread size.

Head Number	Tube ID	Closed	Expand To	Spider	Arm	Coupling	Coupling Plate	Coupling Tap	Cutter Pin	Arm Pin	Clip	Cone Cutter	Cylinder Cutter	Washer
11740 Wt .84#	1- 3/4	1-1/2	2-1/8	11741 .18#	11742 (2) .09# Ea.	11743 B .25#		5/8 N.C.	11744 (2) .03# Ea.	11745 (2) .02# Ea.		11747 (2) .02# Ea.	11748 (8) .01# Ea.	
3060 Wt 1.7#	2-3/8	1-15/16	2-5/8	3061 .3#	3062 S (3) .14# Ea.	3043 .37#		5/8 - 3/4 N.C.	3364 (3) .06# Ea.	3365 (3) .05# Ea.	3068 (3) .1# Ea.	3047 (3) .04# Ea.	3048 (3) .04# Ea.	
2060 Wt .2#	2-1/2	2-1/4	3	3361 .43#	3062 S (3) .14# Ea.	2043 .4#		3/4 - 7/8 N.C.	3364 (3) .06# Ea.	3365 (3) .05# Ea.	3368 (3) .13# Ea.	337 (3) .06# Ea.	338 (15) .02# Ea.	339 (3) .01 Ea.
1060 Wt 3#	3	2-5/8	3-3/4	1061 .56#	1062 S (3) .25# Ea.	1033 .68#		3/4 - 7/8 1 N.C.	1064 (3) .1# Ea.	1065 (3) .09# Ea.	1068 (3) .14# Ea.	1047 (3) .06# Ea.	1048 (15) .02# Ea.	
960 Wt 5.3#	3-1/4	3-1/8	4-1/8	961 .1#	762 S (3) .37# Ea.	543 .8#		7/8 1 N.C.	35264 (3) .2# Ea.	765 (3) .17# Ea.	35268 (3) .2# Ea.	947 (3) .12# Ea.	948 (27) .02# Ea.	749 (3) .01# Ea.
760 Wt 5.5#	3-1/2	3-1/4	4-1/2	761 .12#	762 S (3) .37# Ea.	743 .8#		1 - 1-1/8 N.F.	35264 (3) .2# Ea.	765 (3) .17# Ea.	35268 (3) .2# Ea.	747 (3) .18# Ea.	748 (24) .03# Ea.	749 (3) .01# Ea.
5060 AS Wt 5.5#	4-1/2	3-7/8	5-5/8	5061 A .15#	562 S (3) .3# Ea.	843 .8#	5043 A .3#	1-1/8 N.F.	564 (3) .17# Ea.	565 (3) .13# Ea.	568 (3) .15# Ea.	747 (3) .18# Ea.	748 (24) .03# Ea.	749 (3) .01# Ea.
35260 Wt 8#	5-1/4	4-1/2	6	35261 .22#	35262 S(4) .35# Ea.	35243 .12#	35243 A .3#	1-3/8 N.F.	35264 (4) .2# Ea.	35265 (4) .14# Ea.	35268 (4) .2# Ea.	271 (4) .09# Ea.	C 79 (12) .15# Ea.	749 (4) .01# Ea.
36060 Wt 13.5	6	5-3/8	7-1/8	36041 .28#	36562 S (4) .9# Ea.	36043 .11#		1-1/8 - 1-3/8 N.F.	36564 (4) .3# Ea.	36545 (4) .2# Ea.	36546 (4) .2# Ea.	37697 (4) .2# Ea.	37688 (12) .15# Ea.	36549 (4) .01# Ea.
36560 Wt 15#	6-1/2	5-7/8	7-5/8	36541 C .32#	36562 S (4) .9# Ea.	35243 .12#	36543 A .4#	1-3/8 N.F.	36564 (4) .3# Ea.	36545 (4) .2# Ea.	36546 (4) .2# Ea.	37697 (4) .2# Ea.	37288 (12) .2# Ea.	36549 (4) .01# Ea.
37260 Wt 16.8#	7-1/4	6-1/4	8	37241 .42#	36562 S (4) .9# Ea.	8293 .15#	37243 A .5#	1-3/8 N.F.	36564 (4) .3# Ea.	36545 (4) .2# Ea.	36546 (4) .2# Ea.	37697 (4) .2# Ea.	37288 (12) .2# Ea.	36549 (4) .01# Ea.
37660 Wt 18.5#	7-5/8	6-1/2	8-1/2	37641 .54#	36562 S (5) .9# Ea.	8293 .15#	37643 A .9#	1-3/8 N.F.	36564 (5) .3# Ea.	36545 (5) .2# Ea.	36546 (5) .2# Ea.	37697 (5) .2# Ea.	37288 (15) .2# Ea.	36549 (5) .01# Ea.
38760 Wt 20.1#	8-3/4	7-1/2	9-1/2	38741 .64#	36562 S (5) .9# Ea.	8293 .15#	38743 A .15#	1-3/8 N.F.	36564 (5) .3# Ea.	36545 (5) .2# Ea.	36546 (5) .2# Ea.	37697 (5) .2# Ea.	37288 (15) .2# Ea.	36549 (5) .01# Ea.

For Curved Tubes and Pipe 1-3/4" – 9" I.D.

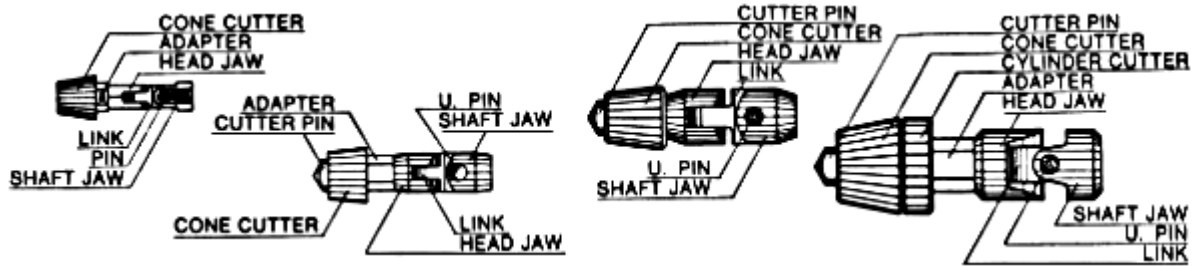


Head Number	Tube ID	Closed	Expand To	Spider	Arm	Universal Cpl	Coupling Plate	Coupling Tap	Cutter Pin	Arm Pin	Clip	Cone Cutter	Cylinder Cutter	Washer
11740 C Wt 1#	2	1-1/2	2-1/8	11741 .18#	11742 (2) .09# Ea.	4151 W .4#		5/8 N.C.	11744 (2) .03# Ea.	11745 (2) .02# Ea.		11747 (2) .02# Ea.	11748 (8) .01# Ea.	
3060 C Wt 1.8#	2-1/4	1-15/16	2-5/8	3061 .3#	3062 S (3) .14# Ea.	4151 .4#		5/8 N.C.	3364 (3) .06# Ea.	3365 (3) .05# Ea.	3068 (3) .1# Ea.	3047 (3) .04# Ea.	3048 (3) .04# Ea.	
3360 Wt .2#	2-5/8	2-1/4	3	3361 .43#	3362 S (3) .18# Ea.	3333 .85#		3/4 N.C.	3364 (3) .06# Ea.	3365 (3) .05# Ea.	3368 (3) .13# Ea.	337 (3) .06# Ea.	338 (15) .02# Ea.	339 (3) .01 Ea.
3560 3/4 3560 7/8 Wt 3.2#	2-7/8	2-5/8	3-3/4	1061 .56#	1062 S (3) .25# Ea.	3532 (3/4) 3531 (7/8) .8#		3/4 N.C.	1064 (3) .1# Ea.	1065 (3) .09# Ea.	1068 (3) .14# Ea.	1047 (3) .06# Ea.	1048 (15) .02# Ea.	
960 C Wt 6#	3-1/2	3-1/8	4-1/4	961 .1#	762 S (3) .37# Ea.	551 .15#		7/8 N.C.	35264 (3) .2# Ea.	765 (3) .17# Ea.	35268 (3) .2# Ea.	947 (3) .12# Ea.	948 (27) .02# Ea.	749 (3) .01# Ea.
760 C Wt. 6.8#	3-3/4	3-1/4	4-1/2	761 .12#	762 S (3) .37# Ea.	1151 .2#		7/8 N.C.	35264 (3) .2# Ea.	765 (3) .17# Ea.	35268 (3) .2# Ea.	747 (3) .18# Ea.	748 (24) .03# Ea.	749 (3) .01# Ea.
5060 A Wt 10#	4-13/16	3-7/8	5-5/8	5061 A .15#	562 S (3) .3# Ea.	5051 E .3#	5043 A .3#	1-1/8 N.F.	564 (3) .17# Ea.	565 (3) .13# Ea.	568 (3) .15# Ea.	747 (3) .18# Ea.	748 (24) .03# Ea.	749 (3) .01# Ea.
35260 C Wt 10#	5-1/4	4-1/2	6	35261 .22#	35262 S(4) .35# Ea.	5051 H .31#	35243 A .3#	1-1/8 N.F.	35264 (4) .2# Ea.	35265 (4) .14# Ea.	35268 (4) .2# Ea.	271 (4) .09# Ea.	C 79 (12) .15# Ea.	749 (4) .01# Ea.
36060 C Wt 16#	6	5-3/8	7-1/8	36041 .28#	36562 S (4) .9# Ea.	5051 H .31#	36043 A .11#	1-1/8 - 1-3/8 N.F.	36564 (4) .3# Ea.	36545 (4) .2# Ea.	36546 (4) .2# Ea.	37697 (4) .2# Ea.	37688 (12) .15# Ea.	36549 (4) .01# Ea.
36560 C Wt 17.3#	6-1/2	5-7/8	7-5/8	36541 C .32#	36562 S (4) .9# Ea.	5051 H .31#	36543 A .4#	1-1/8 - 1- 3/8 N.F.	36564 (4) .3# Ea.	36545 (4) .2# Ea.	36546 (4) .2# Ea.	37697 (4) .2# Ea.	37288 (12) .2# Ea.	36549 (4) .01# Ea.
37260 C Wt 20.1#	7-1/4	6-1/4	8	37241 .42#	36562 S (4) .9# Ea.	21251 A .48#	37243 A .5#	1-3/8 N.F.	36564 (4) .3# Ea.	36545 (4) .2# Ea.	36546 (4) .2# Ea.	37697 (4) .2# Ea.	37288 (12) .2# Ea.	36549 (4) .01# Ea.
37660 C Wt 21.8#	7-5/8	6-1/2	8-1/2	37641 .54#	36562 S (5) .9# Ea.	21251 A .48#	37643 A .9#	1-3/8 N.F.	36564 (5) .3# Ea.	36545 (5) .2# Ea.	36546 (5) .2# Ea.	37697 (5) .2# Ea.	37288 (15) .2# Ea.	36549 (5) .01# Ea.
38760 C Wt 23.4#	8-1/4	7-1/2	9-1/2	38741 .64#	36562 S (5) .9# Ea.	21251 A .48#	38743 A .15#	1-3/8 N.F.	36564 (5) .3# Ea.	36545 (5) .2# Ea.	36546 (5) .2# Ea.	37697 (5) .2# Ea.	37288 (15) .2# Ea.	36549 (5) .01# Ea.

Some items are available on a quotation basis only.

Airetool Single Unit Heads

1/2" - 2-1/4" I.D. "SERIES 40"



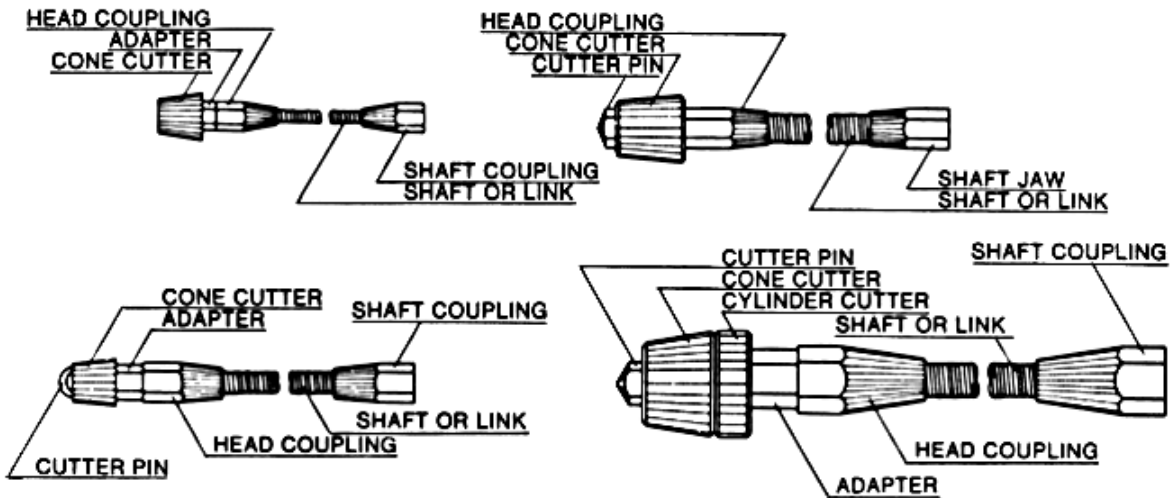
When ordering state the motor number and the motor's shaft thread size.

Head Number	Tube I.D.	Universal Joint	Shaft Jaw Tap	Adapter	Cutter Pin	Cone Cutter	Cylinder Cutter
2440 Wt .03#	1/2	2451 .02#	10-32	2443 .01#		2487 S .01#	
3040 WT.07#	5/8 - 11/16	PA 3051 .04#	1/4 N.F.	2734 .02#		3037 .02#	
2740 WT.07#	3/4 - 13/16	PA 3051 .04#	1/4 N.F.	2734 .02#		C 3 .02#	
X 6440 Wt.15#	13/16	6451 .09#	1/4 N.F.		2944 .02#	2947 .03#	
2940 Wt .18#	7/8 - 27/32	2651 .1#	3/8 N.F.	2943 .03#	2944 .02#	2947 .03#	
2640 Wt.22#	1	2651 .1#	3/8 N.F.	2643 .03#	2644 .03#	337 .03#	
X 6140 Wt .18#	1-1/32	6151 .09#	5/16 N.F.		2644 .03#	337 .03#	
3140 Wt .34#	1-1/8	6651 .19#	7/16 N.F.		3144 A .05#	2837 .1#	
X 6340 Wt .37#	1-1/4	6651 .19#	3/8 N.F.		2544 S .06#	947 .12#	
12240 Wt .37#	1-1/4 - 1-1/2	3151 .19#	7/16 N.F.		2544 S .06#	947 .12#	
X 6540 Wt .37#	1-3/8	6651 .19#	3/8 N.F.		2544 S .06#	6547 .12#	
1740 Wt .7#	1-1/2	31551 .37#	9/16 N.F.	1743 .1#	2844 .06#	1097 .1#	1088 .08#
1940 Wt .9#	1-5/8	4151 .4#	5/8 N.C.	1943 .1#	1944 .08#	797 .2#	788 .13#
X 6640 Wt .5#	1-3/4	6651 .19#	3/8 N.F.		2544 S .06#	797 .2#	
4140 Wt 1#	1-5/8 - 2	4151 .4#	5/8 N.C.	1943 .1#	1944 .08#	897 B 0.25	888 B .16#
4440 C Wt 1.1#	2-1/4	4151 .4#	5/8 N.C.	1943 .1#	1944 .08#	897 .3#	888 .19#

Some items are available on a quotation basis only.

Airetool Type 2 Single Unit Heads

1/2" - 2-1/8" I.D. "30 SERIES"



When ordering state the motor number and the motor's shaft thread size.

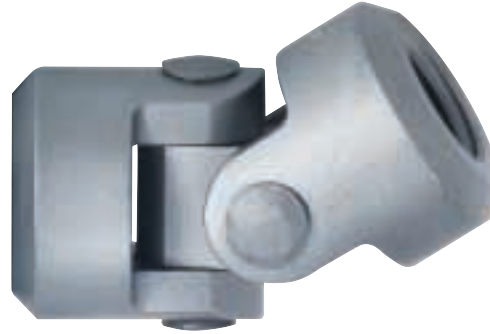
Head Number	Tube ID	Flex Connection	Shaft Cpl. Tap	Head Cpl. Tap	Adapter	Cutter Pin	Cone Cutter	Cylinder Cutter	Length	Diameter
2430 Wt .05#	1/2	2461 .04#	10-32	10-32	2443 .01#		2487 S .01#		4	3/16"
3030 WT.06#	5/8	X 6461 .03#	1/4 N.F.	1/4 N.F.	2734 .02#		3037 .02#		4	3/16"
2730 WT.06#	3/4	X 6461 .03#	1/4 N.F.	1/4 N.F.	2734 .02#		C 3 .02#		4	3/16"
X 6430 Wt. .09#	13/16	X 6461 .03#	1/4 N.F.	1/4 N.F.		2944 .02#	2947 .03#		4	3/16"
2930 Wt .18#	7/8	2961 .1#	3/8 N.F.	3/8 N.F.	2943 .03#	2944 .02#	2947 .03#		4-1/2	1/4"
12130 Wt .19#	1	12161 .1#	5/16 N.F.	5/16 N.F.		2644 .03#	337 .03#		4-1/2	1/4"
2630 Wt .19#	1	2661 .1#	3/8 N.F.	5/16 N.F.		2644 .03#	337 .03#		4-1/2	1/4"
X 6130 Wt .13#	1-1/32	X 6161 .04#	5/16 N.F.	5/16 N.F.		2644 .03#	337 .03#		4	3/16"
3130 Wt .25#	1-1/8	X 6361 .1#	7/16 N.F.	3/8 N.F.		3144 A .05#	2837 .1#		4-1/2	1/4"
X 6330 Wt .28#	1-1/4	X 6361 .1#	3/8 N.F.	7/16 N.F.		2544 S .06#	947 .12#		4-1/2	1/4"
X 6530 Wt .36#	1-1/2	X 6661 .18#	3/8 N.F.	7/16 N.F.		2544 S .06#	6547 .12#		6-1/2	3/8"
X 6630 Wt .44#	1-3/4	X 6661 .18#	3/8 N.F.	7/16 N.F.		2544 S .06#	797 .2#		6-1/2	3/8"
4130 Wt 2.2#	1-5/8 - 2-1/8	4161 .6#	5/8 N.C.	5/8 N.C.	1943 .1#	1944 .08#	897 B 0.25	888 B .16#	7	1/2"

Some items are available on a quotation basis only.

Airetool Universal joints

10-32 - 7/8" N.C.

For Adapting Cleaning Heads to Cleaning Motors



Universal Joint No.	Shaft Jaw	Head Jaw	Link	Pin (2) Req.	Joint O.D.	Overall Length	Thread Size	Cleaners Kits Used On
2451 Wt .02#	2452 .01#	2452 .01#	2454 .01#	2454 .01# Ea.	5/16	1-1/4	10-32 X 10-32	24
PA 3051 Wt .04#	PA 3052 .02#	PA 3052 .02#	PA 3054 .01#	PA 3055 .01# Ea.	7/16 (3/8Hex)	1-3/8	1/4 X 1/4 N.F. N.F.	27, 27 A, 30, 30 A
6451 Wt .07#	6453 V .02#	6453 V .02#	6454 V .02#	6455 V .01# Ea.	1/2	1-11/16	1/4 X 1/4 N.F. N.F.	X 64
6451 B Wt .07#	6453 V .02#	6457 V .02#	6454 V .02#	6455 V .01# Ea.	1/2	1-11/16	1/4 X 5/16 N.F. N.C.	X 64
6151 C Wt .07#	6452 V .02#	6453 V .02#	6454 V .02#	6455 V .01# Ea.	1/2	1-11/16	5/16 X 1/4 N.F. N.F.	X 60, X 61
6151 Wt .07#	6452 V .02#	6452 V .02#	6454 V .02#	6455 V .01# Ea.	1/2	1-11/16	5/16 X 5/16 N.F. N.F.	X 61
6151 B Wt .07#	6457 V .02#	6457 V .02#	6454 V .02#	6455 V .01# Ea.	1/2	1-11/16	5/16 X 5/16 N.F. N.C.	X 61
2651 Wt .1#	2652 .03#	2652 .03#	2654 .02#	2655 .01# Ea.	5/8	1-19/32	3/8 X 3/8 N.F. N.F.	26, 29
6351 B Wt .19#	6652 .06#	6657 .06#	6654 .06#	6655 .01# Ea.	3/4	2-1/8	3/8 X 5/16 N.F. N.C.	X 63
6651 B Wt .19#	6652 .06#	6658 .06#	6654 .06#	6655 .01# Ea.	3/4	2-1/8	3/8 X 7/16 N.F. N.C.	X 65, X 66
6651 Wt .19#	6652 .06#	6653 .06#	6654 .06#	6655 .01# Ea.	3/4	2-1/8	3/8 X 7/16 N.F. N.F.	31, X 63, X 65, X 66
3151 Wt .19#	6653 .06#	6653 .06#	6654 .06#	6655 .01# Ea.	3/4	2-1/8	7/16 X 7/16 N.F. N.F.	31
31551 Wt .37#	4157 .1#	4153 .1#	4154 .06#	4155 .03# Ea.	1-1/8	2-1/16	9/16 X 1/2 N.C. N.C.	3150
4151 W Wt .4#	4152 .1#	4153 .1#	4154 .06#	4155 .03# Ea.	1-1/8	2-1/16	5/8 X 1/2 N.C. N.C.	11740 C
4151 Wt .4#	4152 .1#	4152 .1#	4154 .06#	4155 .03# Ea.	1-1/8	2-1/16	5/8 X 5/8 N.C. N.C.	3162, 3175, 3187, 3200, 3212 4200, 4225, 4237, 4250, 4275
3333 WT .8#	3552 .25#	3332 .25#	3554 0.2	3555 .05# Ea.	1-1/2	2-3/4	3/4 X 3/4 N.C. N.C.	3360 Head
3532 WT .8#	3552 .25#	3533 .25#	3554 0.2	3555 .05# Ea.	1-19/32	2-3/4	3/4 X 3/4 N.C. N.C.	3540, 3560 Head 3/4 N.C. Rotor Thread
3531 WT .8#	3557 .25#	3533 .25#	3554 0.2	3555 .05# Ea.	1-19/32	2-3/4	7/8 X 3/4 N.C. N.C.	3540, 3560 Head 7/8 N.C. Rotor Thread

Some items are available on a quotation basis only.

Airetool Universal Joints

5/8" N.C. - 1-3/8" N.F.

For Adapting Cleaning Heads to Cleaning Motors



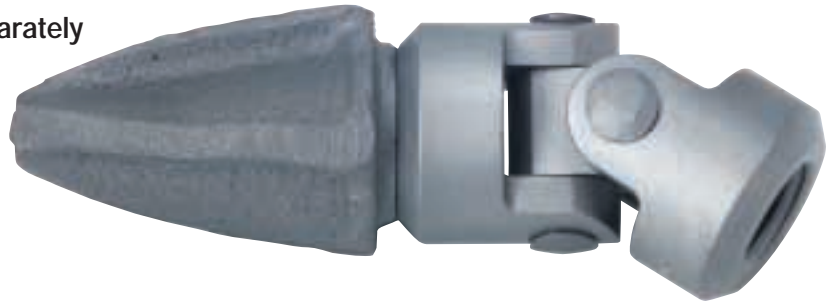
Universal No. Joint	Shaft Jaw	Head Jaw	Link	Pin (2) Req.	Joint O.D.	Overall Length	Thread Size	Cleaners Kits Used On
2251 Wt. .9#	3553 .3#	3553 .3#	3554 .2#	3555 .05#	1.5	2.75	5/8 X 5/8 N.C. N.C.	
2151 wt. .85	3552 .25#	3553 .3#	3554 .2#	3555 .05#	1.5	2.75	3/4 X 5/8 N.C. N.C.	3225, 3237
3551 wt. .8#	3552 .25#	3552 .25#	3554 .2#	3555 .05#	1.5	2.75	3/4 X 3/4 N.C. N.C.	4300, 4300 A, 4325
3551 A wt. .85	3552 .25#	3552 .25#	3554 A .25#	3555 .05#	1.5	2.625	3/4 X 3/4 N.C. N.C.	15 Deg. Restricted
1551 Wt. 1.5#	253 .5#	1553 .5#	654 .25#	255 .06#	1.625	3.4375	3/4 X 5/8 N.C. N.C.	
251 Wt. 1.5#	253 .5#	253 .5#	654 .25#	255 .06#	1.625	3.4375	3/4 X 3/4 N.C. N.C.	
21451 wt. 1.4#	21452 .4#	1553 .5#	654 .25#	255 .06#	1.625	3.4375	7/8 X 5/8 N.C. N.C.	3250, 3262,
651 H Wt. .17#	653 .6#	653 .6#	654 .25#	655 .07#	1-3/4	3.4375	3/4 X 3/4 N.C. N.C.	
651 wt. 1.6#	652 .5#	653 .6#	654 .25#	655 .07#	1-3/4	3.4375	7/8 X 3/4 N.C. N.C.	3275, 3287, 4350,
651 A wt. 1.6#	652 .5#	653 .6#	654 A .3#	655 .07#	1-3/4	3-7/32	7/8 X 3/4 N.C. N.C.	15 Deg. Restricted
551 wt. 1.5#	652 .5#	652 .5#	654 .25#	655 .07#	1-3/4	3.4375	7/8 X 7/8 N.C. N.C.	4400, 4450, 4425, 4450, 4450 A,
21051 wt. 2.1#	1152 .7#	21053 .8#	1154 .4#	1155 .1#	1-15/16	3.6875	1 X 3/4 N.F. N.C.	3300, 3306
1151 wt. 2#	1152 .7#	1153 .75#	1154 .4#	1155 .1#	1-15/16	3.6875	1 X 7/8 N.F. N.C.	3312, 3318, 3325, 3337
20751 wt. 2.6#	5052 1.1#	1153 .75#	1154 .4#	5055, 1155 .2# .1#	2-1/4	3-7/8	1-1/8 X 7/8 N.F. N.C.	3350 through 3475
5051 wt. 3.2	5052 1.1#	5057 1.2#	1154 .4#	5055 .2#	2-1/4	4.0625	1-1/8 X 7/8 N.F. N.C.	4481, 4500, 4537
5051 E wt. 3.2	5052 1.1#	5053 1.2#	1154 .4#	5055 .2#	2-1/4	4.0625	1-1/8 X 1 N.F. N.F.	4575, 4600, 4650, 4712, 4762
5051 H Wt. 3.1#	5052 1.1#	5052 1.1#	1154 .4#	5055 .2#	2-1/4	4.0625	1-1/8 X 1-1/8 N.F. N.F.	
21251 H wt. 5#	21252 1.6#	21257 1.8#	21254 1#	21255 .2#	2-7/16	5.3125	1-3/8 X 1 N.F. N.F.	3500 through 3900
21251 wt. 4.9#	21252 1.6#	21253 1.7#	21254 1#	21255 .2#	2-7/16	5.3125	1-3/8 X 1-1/8 N.F. N.F.	3975 through 31325
21251 A Wt. 4.8#	21252 1.6#	21252 1.6#	21254 1#	21255 .2#	2-7/16	5.3125	1-3/8 X 1-3/8 N.F. N.F.	

Some items are available on a quotation basis only.

Airetool Drill Heads

Airetool Drill Heads are Made From Alloy Steel

Universal Coupling Must Be Ordered Separately



Tube I.D.	Std Drill	Hard Surface Drill	Thread Stud Size	Drill Diameter	Weight Lbs.
1/2	MD 1	N/A	10-32	7/16	0.01
5/8	MD 2	N/A	1/4 N.F.	1/2	0.02
11/16 - 13/16	MD 3	N/A	1/4 N.F.	5/8	0.03
7/8 - 1-1/8	MD 4	N/A	5/16 N.F.	5/8	0.05
1-1/8 - 1-1/4	MD 5	N/A	7/16 N.F.	13/16	0.06
1-3/8 - 1-3/4	00	00 S	7/16 N.F.	1-1/16	0.2
1- 1/2	0	0 S	1/2 N.C.	1-5/16	0.25
1-5/8 - 2-1/4	1	1 S	5/8 N.C.	1-3/8	0.3
2-1/4 - 2-3/4	4	4 S	5/8 N.C.	1-3/4	0.5
2-3/4 - 3-1/4	5	5 S	3/4 N.C.	2-3/8	1.06
*3-1/4 - 4"	6	6 S	7/8 N.C.	2-5/8	1.6
*9 - 11"	21	21 S	1-1/8 NF	4-5/8	5.5

* Use this drill with drill extension for larger sizes

Drill Extensions

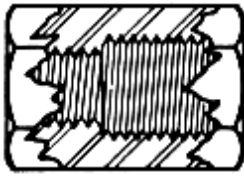
7/8 N.C. Male x 7/8 N.C. Female

Tube I.D.*	Length	Part Number	
4" - 5"	1-1/2	756	4" - 5"
4" - 5"	2	756 A	4" - 5"
4" - 5"	2-1/2	756 B	4" - 5"
5" - 6"	3	756 C	5" - 6"
6" - 10"	4	756 D	7" - 8"
6" - 10"	8	756 G	8" - 10"

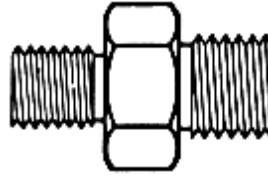
*Using number 6 or 6S Drill.

Some items are available on a quotation basis only.

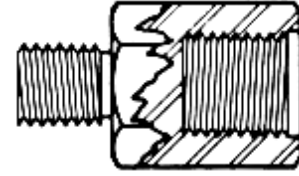
Female X Female



Male X Male

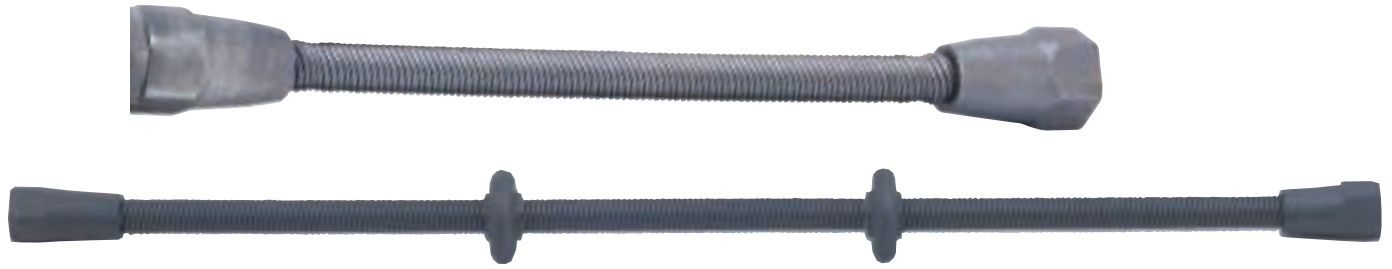


Male X Female



Part Number	Female X Female	Part Number	Male X Male	Part Number	Male X Female
FF 1010	10-32 X 10-32	2443	10-32 X 10-32	MF 22	1/4 N.C. X 1/4 N.F.
FF 1031	10-32 X 5/16 N.C.	MM 1031	10-32 X 5/16 N.F.	MF 231	1/4 N.F. X 5/16 N.C.
FF 22	1/4 N.F. X 1/4 N.F.	MM 250	1/4 N.F. X 1/4 N.F.	MF 231 F	1/4 N.F. X 5/16 N.F.
FF 231	1/4 N.F. X 5/16 N.F.	2734	1/4 N.F. X 5/16 N.C.	MF 312	5/16 N.C. X 1/4 N.F.
FF 237	1/4 N.F. X 3/8 N.F.	MM 24	1/4 N.F. X 7/16 N.F.	MF 312 F	5/16 N.F. X 1/4 N.F.
FF 312	5/16 N.C. X 1/4 N.F.	MM 3034	5/16 N.F. X 1/4 N.F.	MF 3131	5/16 N.C. X 5/16 N.F.
FF 3131	5/16 N.C. X 5/16 N.F.	MM 3131	5/16 N.C. X 5/16 N.C.	MF 3131 F	5/16 N.F. X 5/16 N.C.
FF3137	5/16 N.C. X 3/8 N.F.	MM 3131 F	5/16 N.C. X 5/16 N.F.	MF 314	5/16 N.C. X 7/16 N.F.
FF314	5/16 N.C. X 7/16 N.F.	MM 3137	5/16 N.F. X 3/8 N.F.	MF 314 F	5/16 N.F. X 7/16 N.F.
FF 374	3/8 N.F. X 7/16 N.C.	MM 3737	3/8 N.C. X 3/8 N.C.	2943	3/8 N.F. X 1/4 N.F.
FF 374 F	3/8 N.F. X 7/16 N.F.	MM 3737 F	3/8 N.F. X 3/8 N.F.	MF 3731	3/8 N.F. X 5/16 N.C.
FF 376	3/8 N.C. X 5/8 N.C.	MM 374	3/8 N.C. X 7/16 N.C.	MF 3731 F	3/8 N.F. X 5/16 N.F.
FF 437	7/16 N.C. X 3/8 N.C.	MM 374 F	3/8 N.F. X 7/16 N.F.	2643	3/8 N.F. X 5/16 N.F.
FF 45	7/16 N.F. X 1/2 N.C.	MM 437	7/16 N.C. X 3/8 N.F.	MF 3737	3/8 N.C. X 3/8 N.F.
FF 456	7/16 N.F. X 9/16 N.C.	MM 44	7/16 N.F. X 7/16 N.F.	MF 374	3/8 N.C. X 7/16 N.C.
FF 46	7/16 N.F. X 5/8 N.C.	MM 456	7/16 N.F. X 9/16 N.C.	MF 374 F	3/8 N.F. X 7/16 N.F.
FF 47	7/16 N.C. X 3/4 N.C.	MM 46	7/16 N.F. X 5/8 N.C.	MF 431	7/16 N.C. X 5/16 N.C.
FF 54	1/2 N.F. X 7/16 N.C.	MM 5056	1/2 N.C. X 9/16 N.C.	MF 431 F	7/16 N.F. X 5/16 N.F.
FF 56	1/2 N.F. X 5/8 N.C.	MM 56	1/2 N.C. X 5/8 N.C.	MF 433	7/16 N.C. X 3/8 N.C.
FF 56 F	1/2 N.F. X 5/8 N.F.	MM 564	9/16 N.C. X 7/16 N.C.	MF 4343	7/16 N.C. X 7/16 N.F.
FF 564	9/16 N.C. X 7/16 N.C.	MM 5650	9/16 N.C. X 1/2 N.F.	MF 435	7/16 N.C. X 1/2 N.C.
FF 5656	9/16 N.C. X 9/16 N.C.	MM 5656	9/16 N.C. X 9/16 N.C.	MF 435 F	7/16 N.F. X 1/2 N.C.
FF 566	9/16 N.C. X 5/8 N.C.	MM 566	9/16 N.C. X 5/8 N.C.	MF 436	7/16 N.C. X 5/8 N.C.
FF 567	9/16 N.C. X 3/4 N.C.	MM 567	9/16 N.C. X 3/4 N.C.	MF 436 F	7/16 N.F. X 5/8 N.C.
FF 637	5/8 N.C. X 3/8 N.F.	MM 568	9/16 N.C. X 7/8 N.C.	MF 531	1/2 N.F. X 5/16 N.F.
FF 64	5/8 N.C. X 7/16 N.C.	MM 561	9/16 N.C. X 1 N.F.	1743	1/2 N.C. X 3/8 N.C.
FF 65	5/8 N.C. X 1/2 N.C.	MM 66	5/8 N.C. X 5/8 N.C.	MF 543	1/2 N.C. X 7/16 N.C.
FF 66	5/8 N.C. X 5/8 N.C.	MM 67	5/8 N.C. X 3/4 N.C.	MF 543 F	1/2 N.F. X 7/16 N.C.
FF 66 F	5/8 N.C. X 5/8 N.F.	MM 68	5/8 N.C. X 7/8 N.C.	MF 56	1/2 N.C. X 5/8 N.C.
FF 67	5/8 N.C. X 3/4 N.C.	MM 77	3/4 N.C. X 3/4 N.C.	MF 56 F	1/2 N.F. X 5/8 N.C.
FF 68	5/8 N.C. X 7/8 N.C.	MM 78	3/4 N.C. X 7/8 N.C.	MF 57	1/2 N.C. X 3/4 N.C.
FF 77	3/4 N.C. X 3/4 N.C.	MM 88	7/8 N.C. X 7/8 N.C.	MF 563	9/16 N.C. X 3/8 N.C.
FF 78	3/4 N.C. X 7/8 N.C.	MM 81	7/8 N.C. X 1 N.C.	MF 565	9/16 N.C. X 1/2 N.C.
FF 856	7/8 N.C. X 9/16 N.C.	MM 11	1 N.F. X 1 N.F.	MF 566	9/16 N.C. X 5/8 N.C.
FF 86	7/8 N.C. X 5/8 N.F.	MM 112	1 N.F. X 1-1/8 N.F.	MF 567	9/16 N.C. X 3/4 N.C.
FF 88	7/8 N.C. X 7/8 N.C.	MM 1111	1-1/8 N.F. X 1-1/8 N.F.	MF 568	9/16 N.C. X 7/8 N.C.
FF 81	7/8 N.C. X 1 N.F.	MM 1313	1-3/8 N.F. X 1-3/8 N.F.	MF 561	9/16 N.C. X 1 N.F.
FF 16	1 N.F. X 5/8 N.C.			MF 631	5/8 N.C. X 5/16 N.C.
FF 17	1 N.F. X 3/4 N.C.			MF 637	5/8 N.C. X 3/8 N.C.
FF 11	1 N.F. X 1 N.F.			1943	5/8 N.C. X 7/16 N.F.
FF 111	1 N.F. X 1-1/8 N.F.			MF 65	5/8 N.C. X 1/2 N.F.
FF 118	1-1/8 N.F. X 7/8 N.C.			MF 656	5/8 N.C. X 9/16 N.C.
FF 1111	1-1/8 N.F. X 1-1/8 N.F.			MF 68	5/8 N.C. X 7/8 N.C.
				MF 743	3/4 N.C. X 7/16 N.F.
				MF 743 F	3/4 N.F. X 7/16 N.C.
				MF 76	3/4 N.C. X 5/8 N.C.
				MF 71	3/4 N.C. X 1 N.C.
				MF 711	3/4 N.C. X 1-1/8 N.F.
				MF 86	7/8 N.C. X 5/8 N.C.
				MF 86 F	7/8 N.C. X 5/8 N.F.
				MF 87	7/8 N.C. X 3/4 N.C.
				MF 81	7/8 N.C. X 1 N.F.
				MF 811	7/8 N.C. X 1-1/8 N.F.
				MF 813	7/8 N.C. X 1-3/8 N.F.
				MF 16	1 N.F. X 5/8 N.F.
				MF 18	1 N.F. X 7/8 N.C.
				MF 1111	1 N.F. X 1-1/8 N.F.
				MF 1113	1-1/8 N.F. X 1-3/8 N.F.
				MF 138	1-3/8 N.F. X 7/8 N.C.
				MF 1311	1-3/8 N.F. X 1-3/8 N.F.

Airetool Flexible Connections

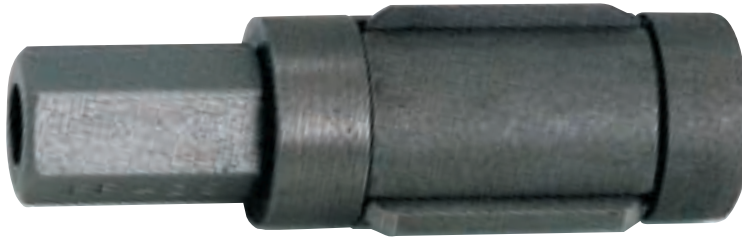


Number	Thread Size	Core Dia.	Cleaner Motor Options	Type "A"		Type C			
				Approx. Length	Wt.	Approx. Length	Wt.		
2461	10-32 X 10-32	3/16	24	4"	.06#	13"	.2#		
X 6461	1/4 N.F. X 1/4 N.F.		30,27, X 64						
X 6462	1/4 N.F. X 5/16 N.C.		27, X 64						
X 6161	5/16 N.F. X 5/16 N.F.		X 61						
X 6162	5/16 N.F. X 5/16 N.C.		X 61						
2661	3/8 N.F. X 5/16 N.F.		26					4-1/2"	.18#
X 6362	3/8 N.F. X 5/16 N.C.	26, 29, X 63							
2961	3/8 N.F. X 3/8 N.F.	29							
X 6361	3/8 N.F. X 7/16 N.F.	X 63,31							
3161	7/16 N.F. X 5/16 N.C.	31							
X 6661	3/8 N.F. X 7/16 N.F.	X 65, X 66	6-1/2"	.25#		.45#			
X 6662	3/8 N.F. X 7/16 N.C.	X 65, X 66							
2561	7/16 N.F. X 7/16 N.F.								
4161	5/8 N.C. X 5/8 N.C.	3175, 4225					.5#		1#
4162	5/8 N.C. X 9/16 N.C. Male	4200, 4225, 4250							
4163	5/8 N.C. X 7/16 N.C.	4200							
31561	9/16 N.C. X 1/2 N.C.	3150							
43061	3/4 N.C. X 3/4 N.C.	4300, 4325	Not Available		14"	1.5#			
43062	3/4 N.C. X 9/16 N.C. Male	3225, 4300, 4325							
32261	3/4 N.C. X 5/8 N.C.	3225							
42561	5/8 N.C. X 5/8 N.C.	3200, 3300, 4250							
42562	5/8 N.C. X 9/16 N.C. Male	3200, 4250							
43561	7/8 N.C. X 3/4 N.C.	4350, 3250					2.6#		
44061	7/8 N.C. X 7/8 N.C.	4350, 4450							
44062	7/8 N.C. X 7/8 N.C. Male	4450							
43562	7/8 N.C. X 9/16 N.C. Male	3250, 4350							
33061	1 N.F. X 1 N.F.	3300				3.1#			
33063	1 N.F. X 7/8 N.C.	3300							
33561	1-1/8 N.F. X 1-1/8 N.F.	3350, 3400, 4600							
33562	1-1/8 N.F. X 1 N.F.	3350, 3400, 4600							
44861	1-1/8 N.F. X 7/8 N.C.	3350, 3400, 4600							
44862	1-1/8 N.F. X 7/8 N.C. Male	3350, 3400, 4600							
35061	1-3/8 N.F. X 1 N.F.	3500 and up							
35062	1-3/8 N.F. X 1- 1/8 N.F.	3500 and up							
35063	1-3/8 N.F. X 1-3/8 N.F. Male	3500 and up							

Some items are available on a quotation basis only.

Airetool Expanding Blade Type Head

1/2" - 4-1/2" I.D.



When ordering state the motor number and the motor's shaft thread size.

Head Number	Tube ID	Min. Diameter	Max. Diameter	Stud Size	Body & Ft Retainer	Rear Retainer	Blade Set	# of Blades	Coupling	Coupling Tap
2840 Wt .05	1/2	29/64	37/64	10-32	2481 .03#	2483 .01#	2487 .01#	4	FF 1010	10-32
3080 Wt .08	5/8	9/16	11/16	1/4 N.F.	3081 .06#	3083 .01#	3087 .01#	3	FF 22	1/4 N.F.
2780 Wt .1	3/4	11/16	13/16	1/4 N.F.	2781 .07#	2783 .01#	2787 .01#	3	FF 22	1/4 N.F.
6480 Wt .17	13/16	3/4	7/8	5/16 N.C.	2981 .12#	2983 .01#	6487 .02#	3	FF 312	1/4 N.F.
2980 Wt .18	7/8	25/32	29/32	5/16 N.C.	2981 .12#	2983 .01#	2987 .03#	3	FF 3137	3/8 N.F.
6180 Wt .25	1	7/8	1-3/32	5/16 N.C.	6181 .18#	6183 .02#	6187 .06#	4	FF3137 FF3131	3/8 N.F. 5/16 N.F.
2680 Wt .25	1	15/16	1-5/32	5/16 N.C.	6181 .18#	6183 .02#	2687 .07#	4	FF 3137	3/8 N.F.
3180 Wt .3	1-1/8	1-1/32	1-1/4	5/16 N.C.	3181 .2#	3183 .03#	3187 .08#	4	FF 314 FF 3131	7/16 N.F. 5/16 N.F.
6380 Wt .31	1-1/4	1-5/32	1-3/8	5/16 N.C.	3181 .2#	3183 .03#	6387 .09#	4	FF3137 FF 314	3/8 N.F. 7/16 N.F.
6580 Wt .33	1-3/8	1-9/32	1-1/2	5/16 N.C.	3181 .2#	3183 .03#	6587 .1#	4	FF3137 FF 314	3/8 N.F. 7/16 N.F.
1780 Wt .83	1-1/2	1-3/8	1-11/16	9/16 N.C.	1781 .6#	1783 .12#	1787 .11#	4	FF 5656	9/16 N.C.
1880 Wt .84	1-5/8	1-1/2	1-13/16	5/8 N.C.	1881 .6#	1883 .12#	1887 .12#	4	FF 66	5/8 N.C.
1980 Wt .84	1-3/4	1-5/8	1-15/16	5/8 N.C.	1981 .6#	1883 .12#	1987 .13#	4	FF 66	5/8 N.C.
2380 C Wt .85	1-7/8	1-3/4	2-1/16	5/8 N.C.	1881 .6#	1883 .12#	2387 C .14#	4	FF 66	5/8 N.C.
2380 Wt .86	2	1-7/8	2-3/16	5/8 N.C.	2381 .6#	1883 .12#	2387 .15#	4	FF 66	5/8 N.C.
21680 S Wt 1.1	2-1/8	1-3/4	2-1/4	5/8 N.C.	21681 S .9#	21683 S .13#	21587 .16#	4	FF 66	5/8 N.C.
21580 Wt 1.5	2-1/4	1-7/8	2-3/8	3/4 N.C.	21581 1.2#	21583 .15#	21587 .16#	4	FF 77	3/4 N.C.
21480 Wt 1.8	2-1/2	2-1/8	2-5/8	3/4 N.C.	21481 1.5#	21483 .18#	21587 .16#	4	FF 78	7/8 N.C.
21380 Wt 3	2-3/4	2-3/8	2-15/16	7/8 N.C.	21381 1.9#	21383 .4#	21087 .7#	6	FF 88	7/8 N.C.
21080 Wt 4	3	2-5/8	3-5/16	1 N.F.	21081 2.9#	21083 .4#	21087 .7#	6	FF 11	1 N.F.
20980 Wt 5.6	3-1/4	2-7/8	3-3/8	1 N.F.	20781 4#	20783 .8#	20987 .8#	6	FF 11	1 N.F.
20780 Wt 5.62	3-1/2	3-1/8	3-5/8	1 N.F.	20781 4#	20783 .8#	20787 82#	6	FF 111	1-1/8 N.F.
20880 Wt 5.64	4	3-5/8	4-1/8	1 N.F.	20781 4#	20783 .8#	20887 .84#	6	FF 111	1-1/8 N.F.
20880 H Wt 5.68	4-1/2	4-1/8	4-5/8	1 N.F.	20781 4#	20783 .8#	20887 H 86#	6	FF 111	1-1/8 N.F.

Some items are available on a quotation basis only.